

L.P.R. 2579-108
 PROVIDENCE, R.I.
 CITY ENGINEER'S OFFICE
 STREET LINE DEPT.
 May 16, 1928.
 050633

PLAT OF DOVER STREET

FROM MT. PLEASANT AVE. 280 FEET WEST

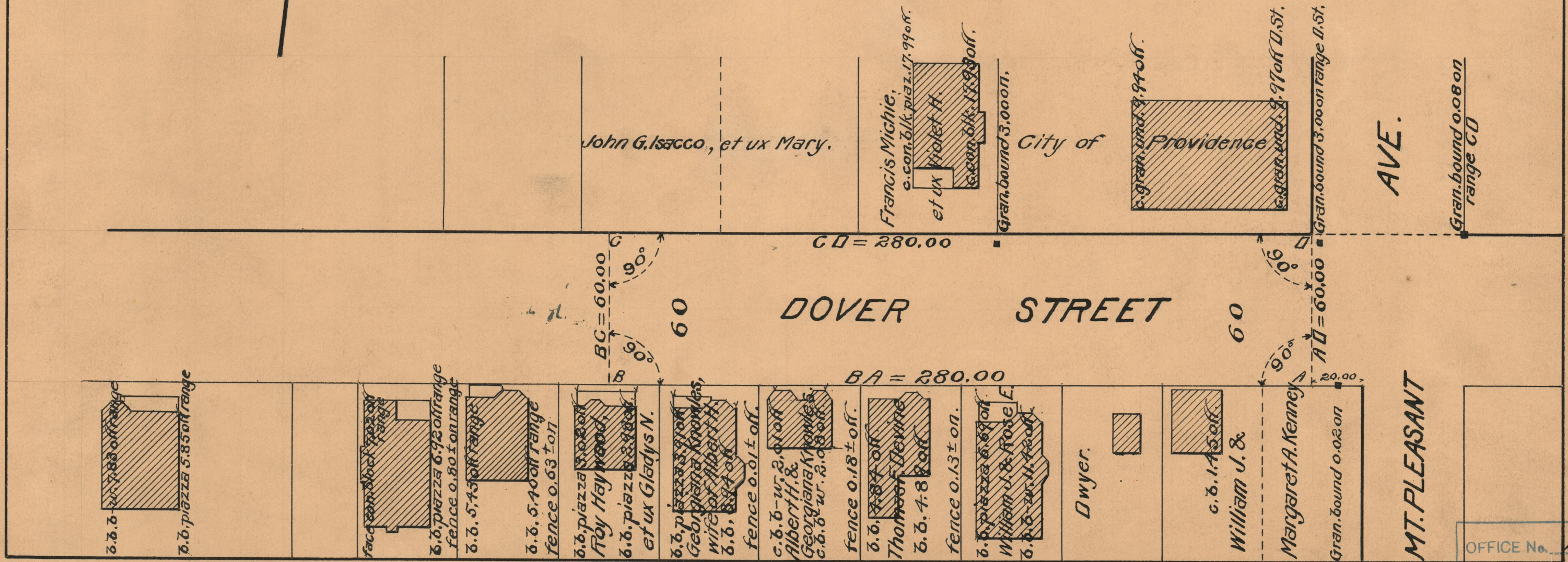
SCALE 40 FEET PER INCH

Declared and established as a Public Highway

By Resolution of the

Board of Aldermen

May 17, 1928



MT. PLEASANT

OFFICE No. 23792
 DRAWER " 73
 SHEET " B-52