

SHEET TWO

PLAT OF

SARGENT AVENUE

FROM MORRIS AVE. TO ELMGROVE AVE.

IN TWO SHEETS

SCALE 40 FEET PER INCH

DECLARED AND ESTABLISHED AS A PUBLIC

HIGHWAY BY RESOLUTION OF THE

BOARD OF ALDERMEN

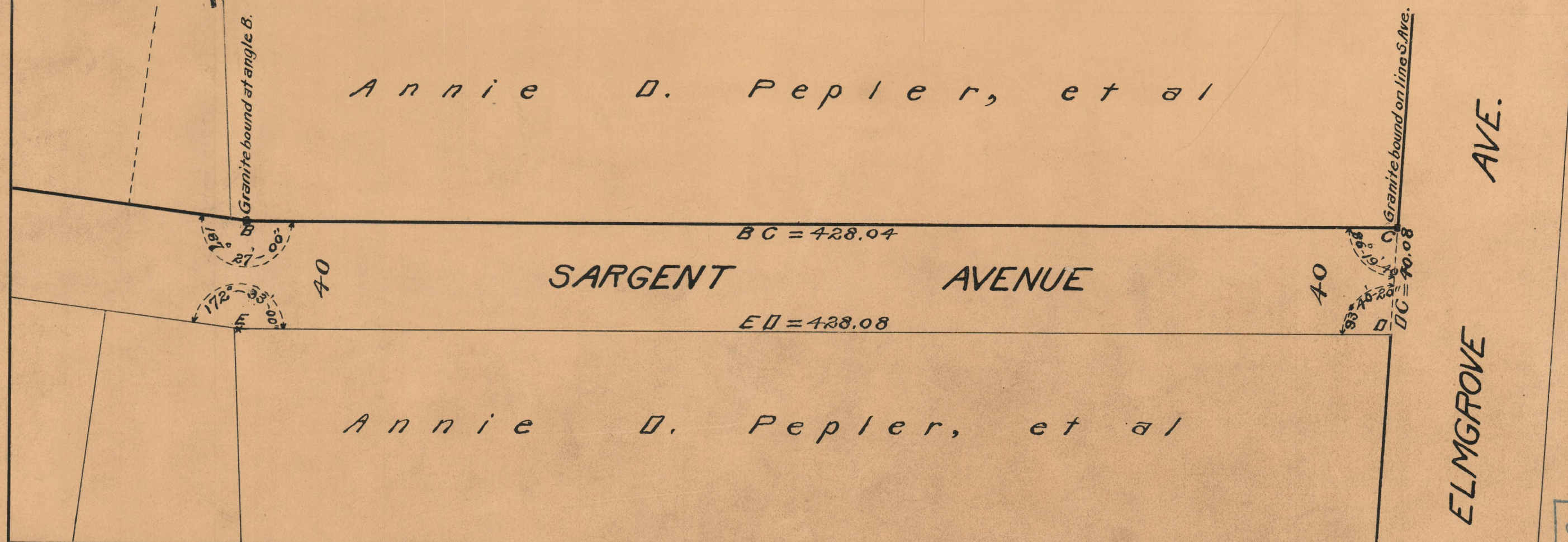
MAY 17, 1928

PROVIDENCE, R.I.
CITY ENGINEER'S OFFICE

STREET LINE DEPT.

May 12, 1928.

050632



OFFICE No.	23791
DRAWER "	73
SHEET "	B-51