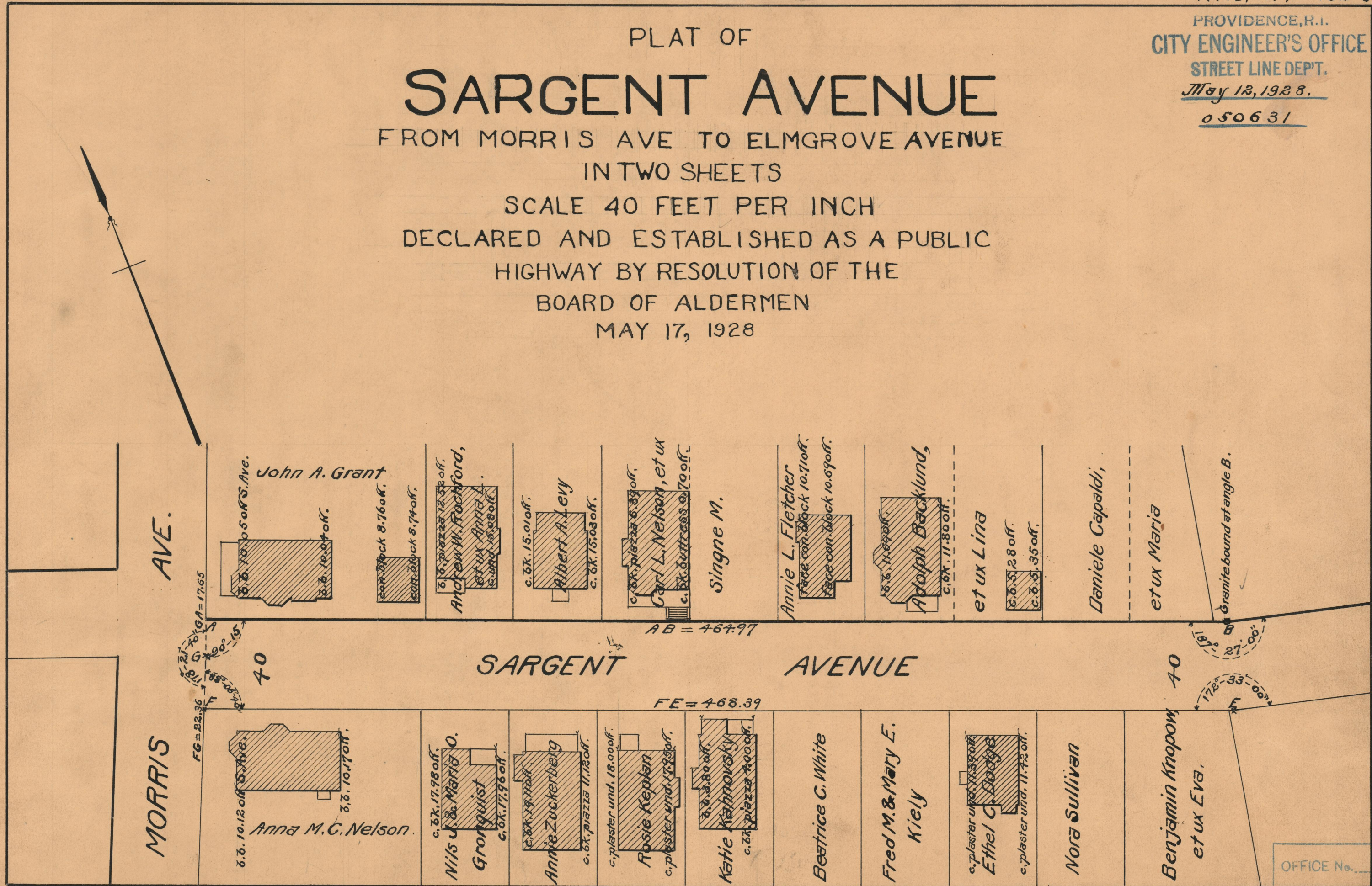
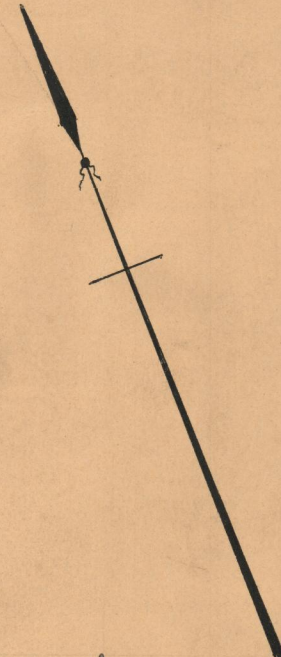


PLAT OF

# SARGENT AVENUE

FROM MORRIS AVE TO ELMGROVE AVENUE  
IN TWO SHEETS

SCALE 40 FEET PER INCH  
DECLARED AND ESTABLISHED AS A PUBLIC  
HIGHWAY BY RESOLUTION OF THE  
BOARD OF ALDERMEN  
MAY 17, 1928



MORRIS AVE.

MORRIS AVE.

SARGENT AVENUE

FG = 22.36  
GA = 17.65  
AB = 464.97  
FE = 468.39

*John A. Grant*  
c. d. 10.05 off S. Ave.  
c. d. 10.04 off.  
c. d. block 8.76 off.  
c. d. block 8.74 off.

*Annie W. Rockford, et ux Anna*  
c. d. piazza 12.32 off.  
c. d. und. 10.98 off.

*Albert A. Levy*  
c. d. 15.01 off.  
c. d. 15.03 off.

*Carl L. Nelson, et ux*  
c. d. piazza 6.33 off.  
c. d. und. 9.70 off.

*Singne M.*

*Annie L. Fletcher*  
c. d. block 10.71 off.  
c. d. block 10.69 off.

*Adolph Backlund, et ux Lina*  
c. d. 11.67 off.  
c. d. 11.80 off.  
c. d. 11.28 off.  
c. d. 11.35 off.

*Daniele Capaldi, et ux Maria*

*Granite bound at angle B.*

*Anna M. C. Nelson*  
c. d. 10.12 off S. Ave.  
c. d. 10.17 off.

*Nils J. & Maria O. Gronquist*  
c. d. 17.98 off.  
c. d. 17.96 off.

*Annie Zuckenberg*  
c. d. 19.71 off.  
c. d. piazza 11.73 off.

*Rosie Kaplan*  
c. d. plaster und. 18.00 off.  
c. d. plaster und. 17.99 off.

*Katie Kahnovsky*  
c. d. 23.80 off.  
c. d. piazza 20.00 off.

*Beatrice C. White*

*Fred M. & Mary E. Kiely*

*Ethel C. Dodge*  
c. d. plaster und. 11.39 off.  
c. d. plaster und. 11.42 off.

*Nora Sullivan*

*Benjamin Knopow et ux Eva.*

OFFICE No.	23790
DRAWER "	73
SHEET "	B-50