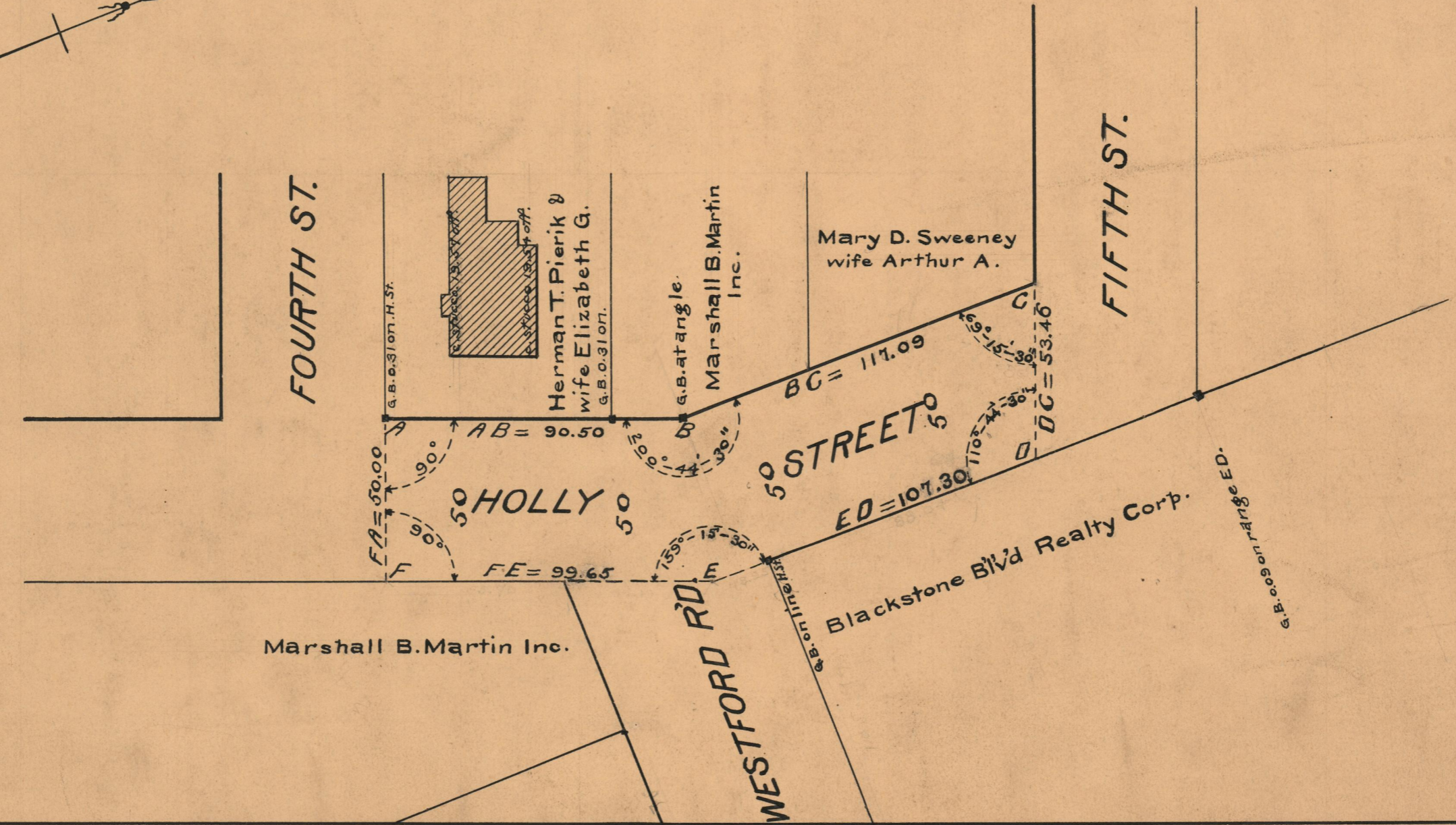
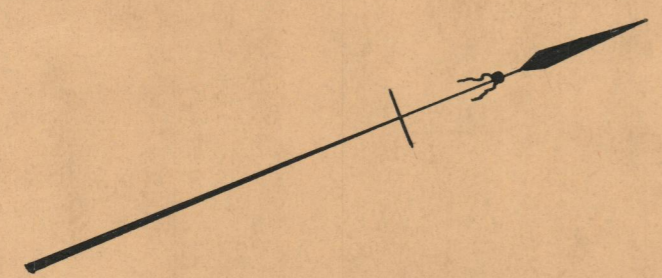


PROVIDENCE, R.I.  
CITY ENGINEER'S OFFICE  
STREET LINE DEPT.  
*May 25, 1928.*  
050582

PLAT OF  
**HOLLY STREET**  
FROM FOURTH ST. TO FIFTH ST.  
SCALE 40 FEET PER INCH  
DECLARED A PUBLIC HIGHWAY BY RESOLUTION  
OF THE BOARD OF ALDERMEN  
MARCH 15, 1928



OFFICE No.	23774
DRAWER "	73
SHEET "	B-47