

Note: The area declared a public highway is indicated by the letters ABC
 The lines thus fixed conform with plat No. 050253 in the City Property Dept.

PLAT OF
LINK STREET

AT JUNCTION WITH SOUTH MAIN ST.

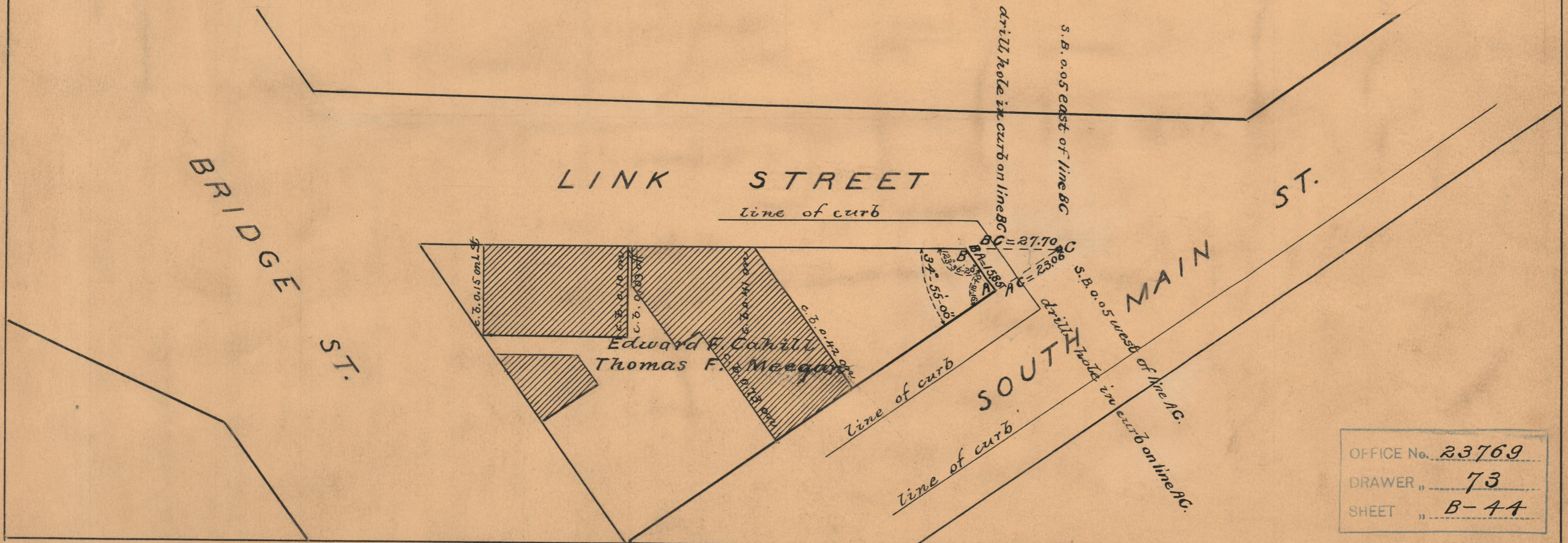
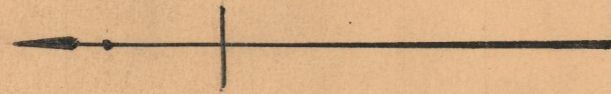
SCALE 30 FEET PER INCH

Declared a public highway by Resolution of the
 Board of Aldermen
 April 19, 1928.
 (By reason of twenty years use)

PROVIDENCE, R.I.
 CITY ENGINEER'S OFFICE
 STREET LINE DEPT.

Jan. 8, 1927

049257



OFFICE No.	23769
DRAWER	73
SHEET	B-44