

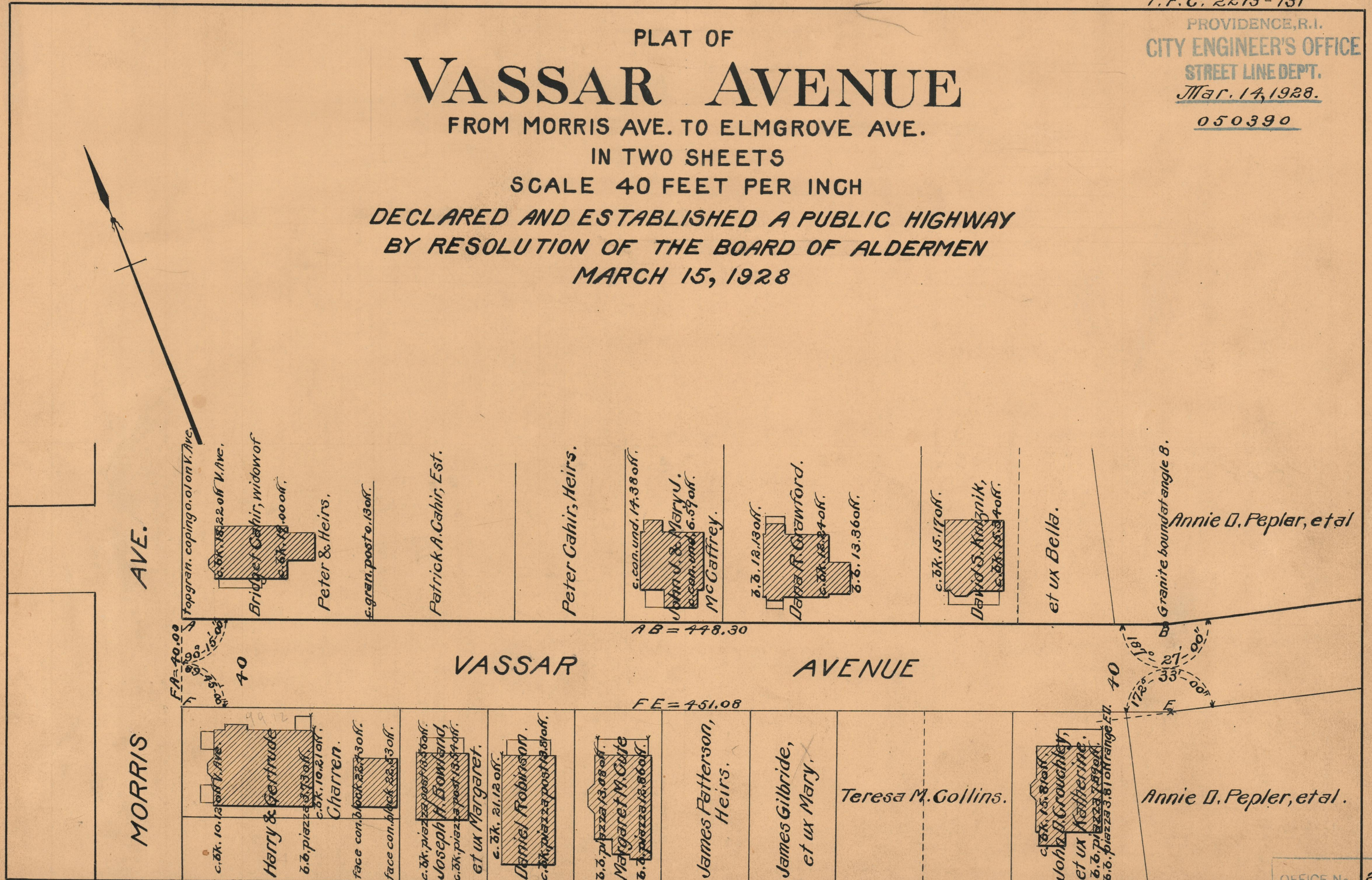
PLAT OF VASSAR AVENUE

FROM MORRIS AVE. TO ELMGROVE AVE.

IN TWO SHEETS

SCALE 40 FEET PER INCH

DECLARED AND ESTABLISHED A PUBLIC HIGHWAY
BY RESOLUTION OF THE BOARD OF ALDERMEN
MARCH 15, 1928



OFFICE No. 23734
 DRAWER " 73
 SHEET " B-40