

PLAT OF

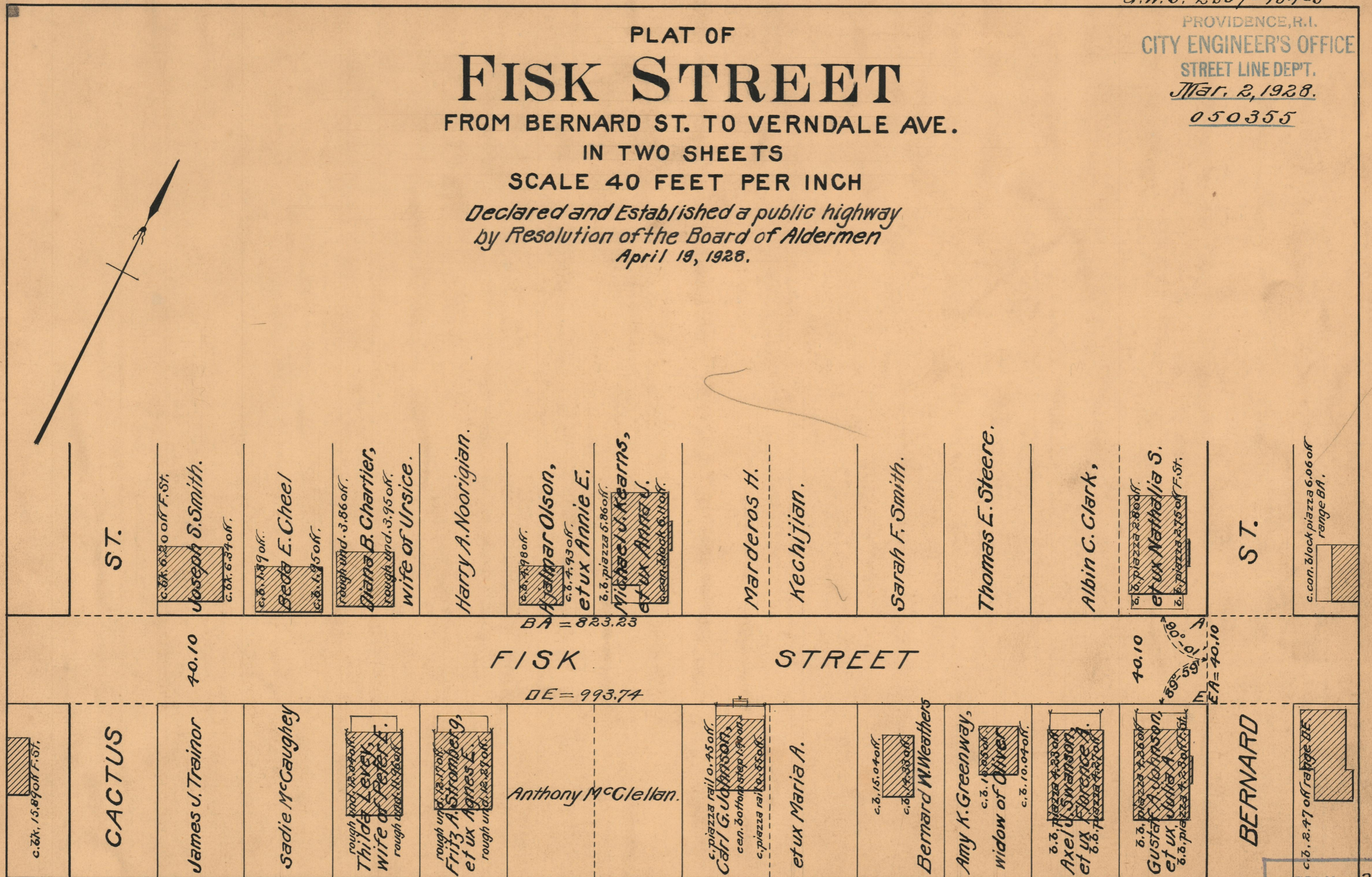
FISK STREET

FROM BERNARD ST. TO VERNDALE AVE.

IN TWO SHEETS

SCALE 40 FEET PER INCH

Declared and Established a public highway
by Resolution of the Board of Aldermen
April 19, 1928.



ST.

c.d. 6.30 off F. St.
Joseph S. Smith.
c.d. 6.34 off.

c.d. 1.139 off.
Beda E. Cheel
c.d. 6.95 off.

rough wd. 3.86 off.
Diana B. Chartier,
rough wd. 3.95 off.
wife of Ursice.

Harry A. Noorigian.

c.d. 4.98 off.
Ajalmar Olson,
c.d. 4.93 off.
et ux **Annie E.**

d.b. piazza 5.86 off.
Michael V. Kearns,
et ux **Anna J.**
c.d. block 6.11 off.

Marderos H.

Kechijian.

Sarah F. Smith.

Thomas E. Steere.

Albin C. Clark,

c.d. piazza 2.80 off.
et ux Nathalia S.
c.d. piazza 2.75 off F. St.

ST.

c.con. block piazza 6.06 off
range BA.

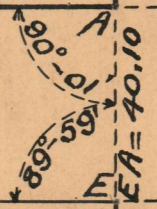
40.10

FISK STREET

BA = 823.23

DE = 993.74

40.10



BERNARD

c.d. 2.47 off range DE

c.d. 15.89 off F. St.

CACTUS

James J. Trainor

Sadie McCaughey

rough wd. 12.04 off.
Thiloda Levy,
wife of Peter F.
rough wd. 11.96 off.

rough wd. 12.17 off.
Fritz A. Stramberg,
et ux **Agnes E.**
rough wd. 12.27 off.

Anthony McClellan.

c. piazza rail 0.45 off.
Carl G. Johnson,
cen. bottom step 1.90 on
c. piazza rail 0.55 off.

et ux **Maria A.**

c.d. 15.04 off.
Bernard W. Weathers

Amy K. Greenway,
c.d. 16.25 off.
widow of **Oliver**
c.d. 10.04 off.

d.b. piazza 4.33 off.
Axel U. Swanson,
et ux **Marjorie A.**
d.b. piazza 4.27 off.

d.b. piazza 4.36 off.
Gustaf A. Johnson,
et ux **Julia A.**
d.b. piazza 4.28 off.

OFFICE No. 23729
DRAWER 73
SHEET B-38