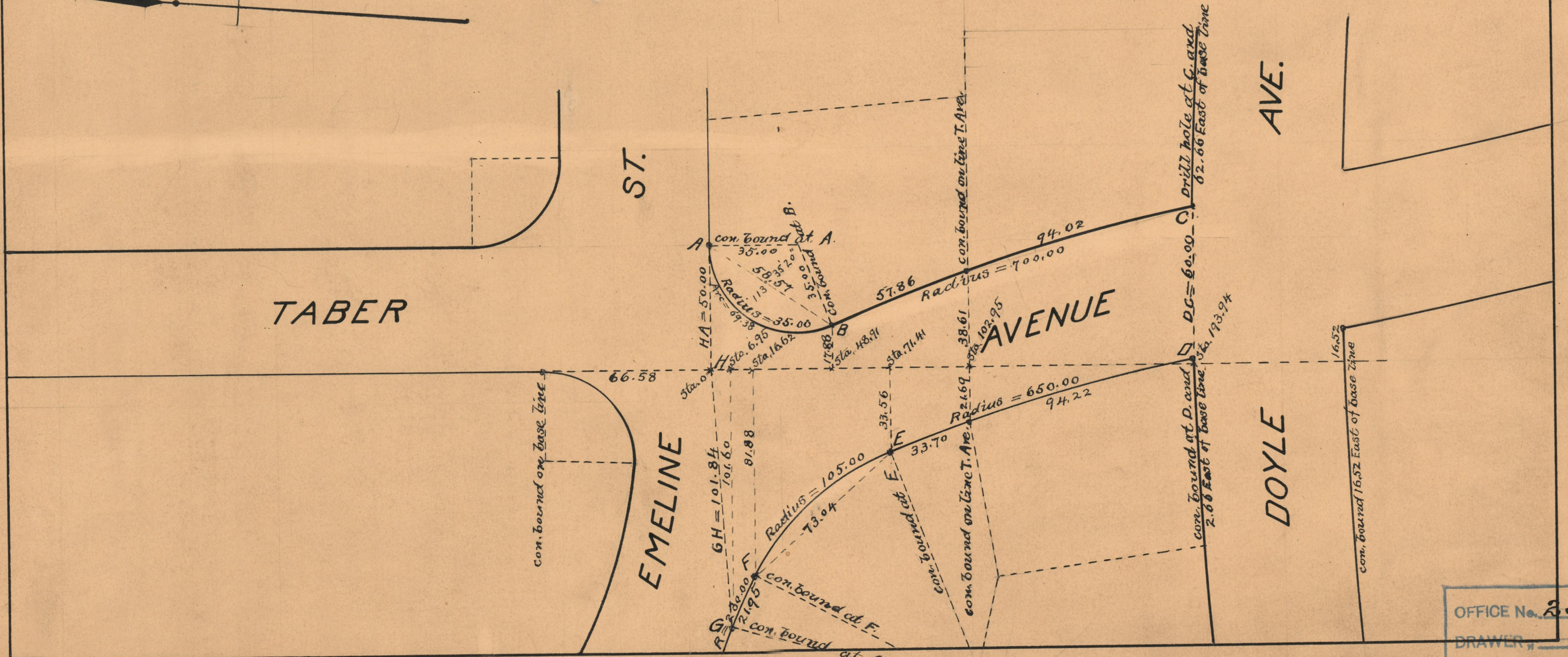


PROVIDENCE, R.I.
CITY ENGINEER'S OFFICE
STREET LINE DEPT.
Dec. 30, 1927.
050271

Note. The area declared a public highway is denoted by the letters ABCDEFGHA, and conforms with the John R. Freeman Plat, No 4, recorded in Plat Book 38, page 3, in the office of the Recorder of Deeds.

PLAT OF
TABER AVENUE
FROM EMELINE ST. TO DOYLE AVE.
SCALE 40 FEET PER INCH
DECLARED A PUBLIC HIGHWAY BY RESOLUTION
OF THE BOARD OF ALDERMEN
NOVEMBER 17, 1927



OFFICE No. 23708
DRAWER 73
SHEET B-35