

Note, The area declared a public highway is designated by the letters ABC

PORTION OF PLEASANT STREET

DECLARED A PUBLIC HIGHWAY

By Resolution of the BOARD OF ALDERMEN

October 15, 1885

SCALE 20 FEET PER INCH

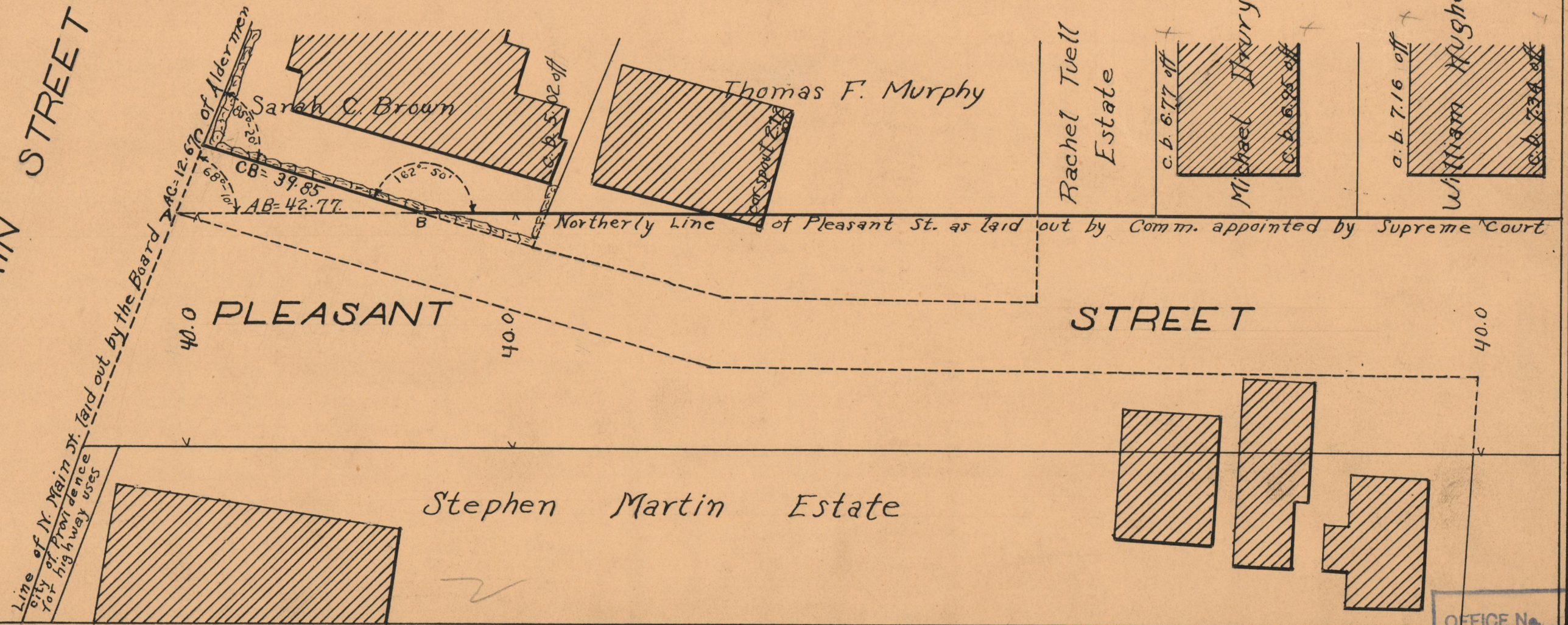
PROVIDENCE, R.I. CITY ENGINEER'S OFFICE

STREET LINE DEPT.

December 11, 1928

051270

NORTH MAIN STREET



OFFICE No.	24377
DRAWN BY	73
SHEET	B-34