

PLAT OF LYNDHURST AVENUE

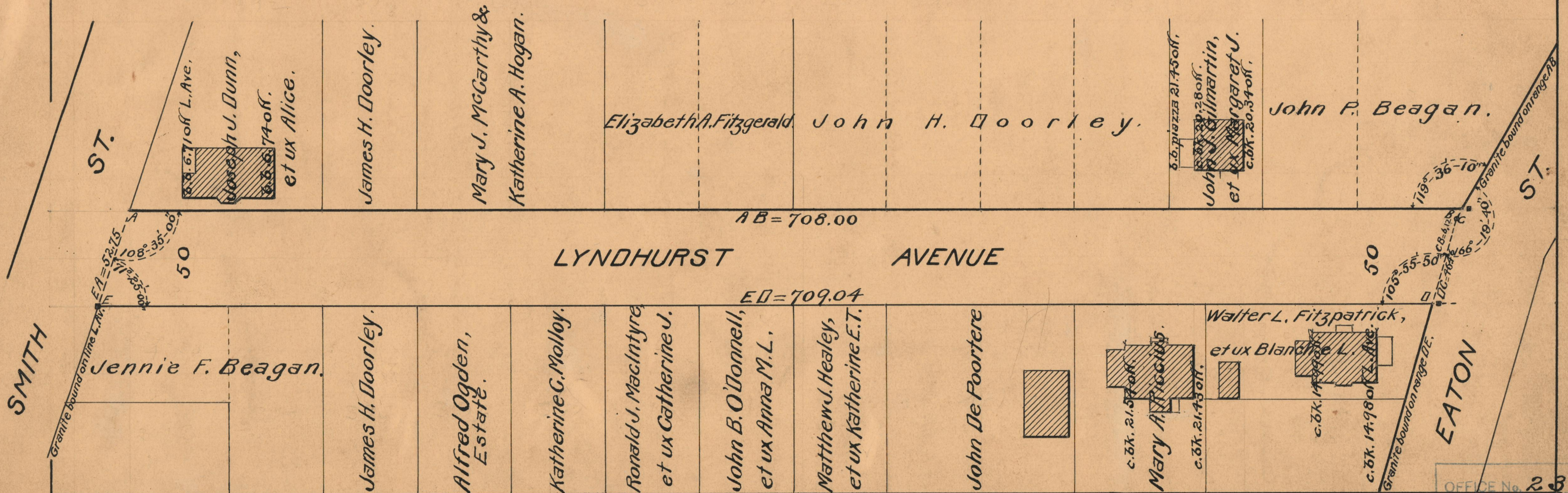
FROM SMITH ST. TO EATON ST.

SCALE 50 FEET PER INCH

DECLARED A PUBLIC HIGHWAY BY RESOLUTION

OF THE BOARD OF ALDERMEN

OCTOBER 6, 1927



OFFICE No. 23706
 DRAWER " 73
 SHEET " B-33