

PLAT OF VIRGINIA AVENUE

FROM BAKER ST. TO NEW YORK AVE.

IN TWO SHEETS

SCALE 40 FEET PER INCH

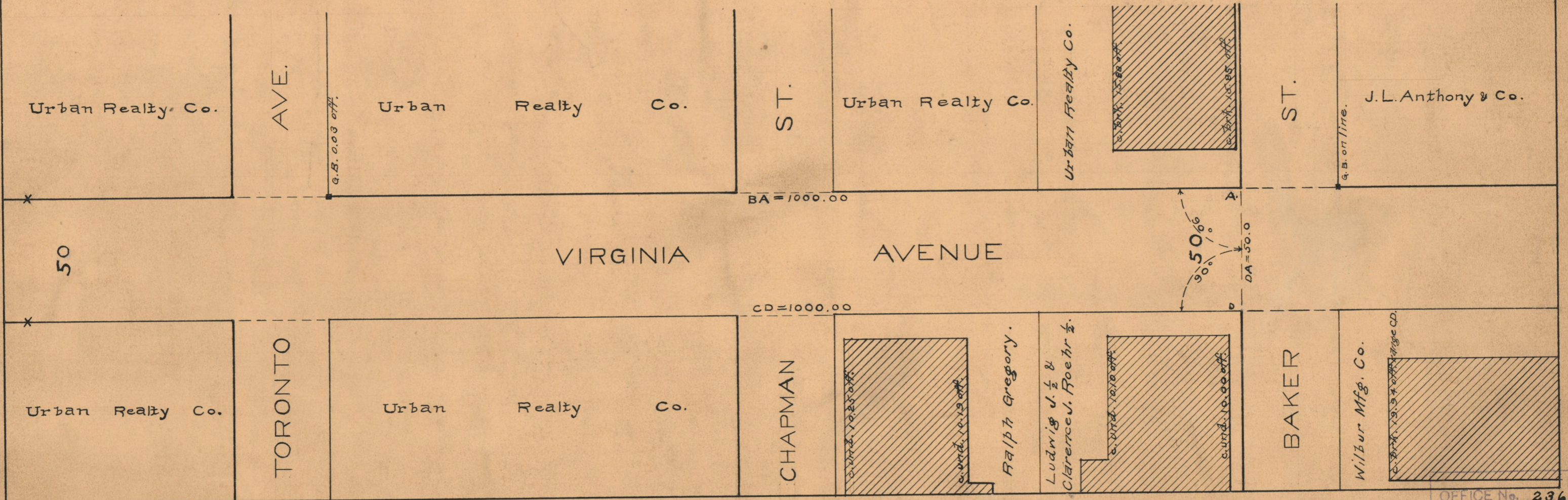
DECLARED A PUBLIC HIGHWAY BY RESOLUTION
OF THE BOARD OF ALDERMEN

NOV. 3, 1927.

PROVIDENCE, R.I.
CITY ENGINEER'S OFFICE
STREET LINE DEPT.

December 21, 1927.

050178.



OFFICE No. 23671

DRAWER " 73

SHEET " B-30.