

PROVIDENCE, R.I.  
CITY ENGINEER'S OFFICE

STREET LINE DEPT.

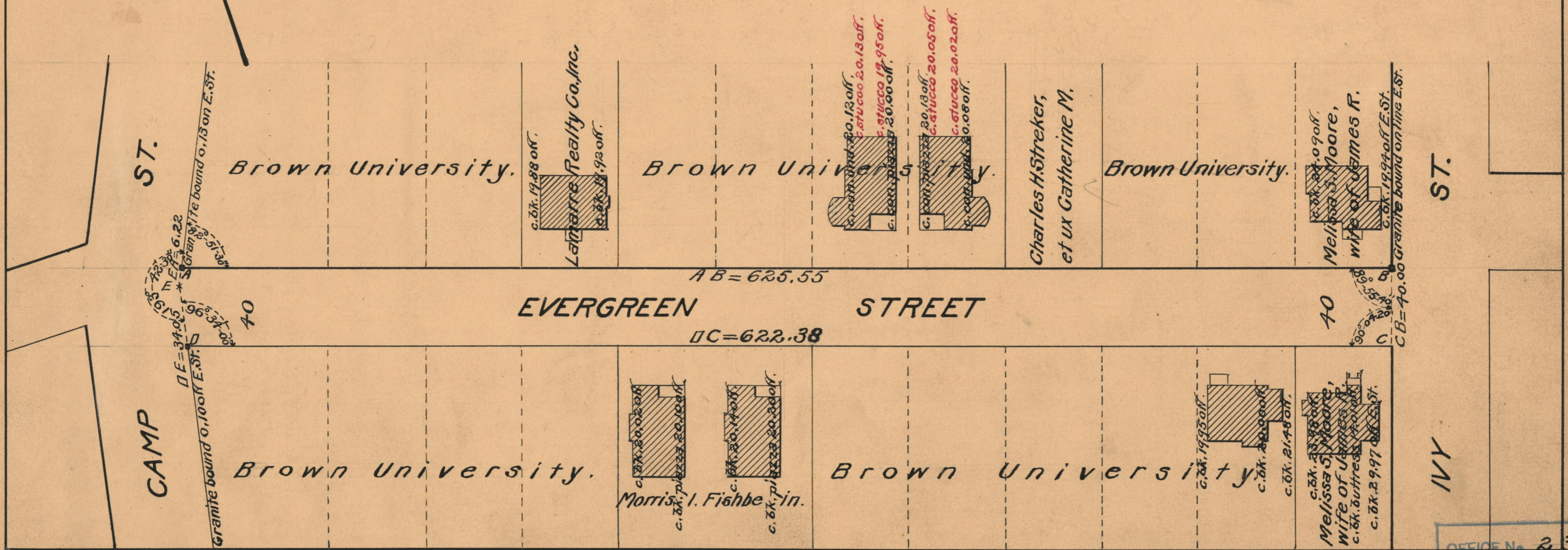
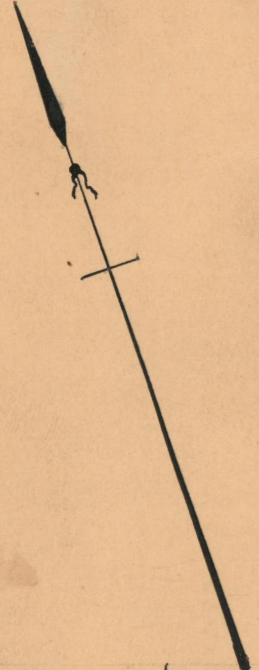
Nov. 30, 1927.

050151

# PLAT OF EVERGREEN STREET

FROM CAMP ST. TO IVY ST.  
SCALE 50 FEET PER INCH

DECLARED A PUBLIC HIGHWAY BY RESOLUTION  
OF THE BOARD OF ALDERMEN  
OCTOBER 20, 1927



CAMP ST.

IVY ST.

ST.

IVY ST.

EVERGREEN STREET

AB = 625.55

BC = 622.38

40

40

OFFICE No. 23669  
DRAWER 73  
SHEET B-29