

PROVIDENCE, R.I.
CITY ENGINEER'S OFFICE
STREET LINE DEPT.
Dec. 12, 1927.

050150

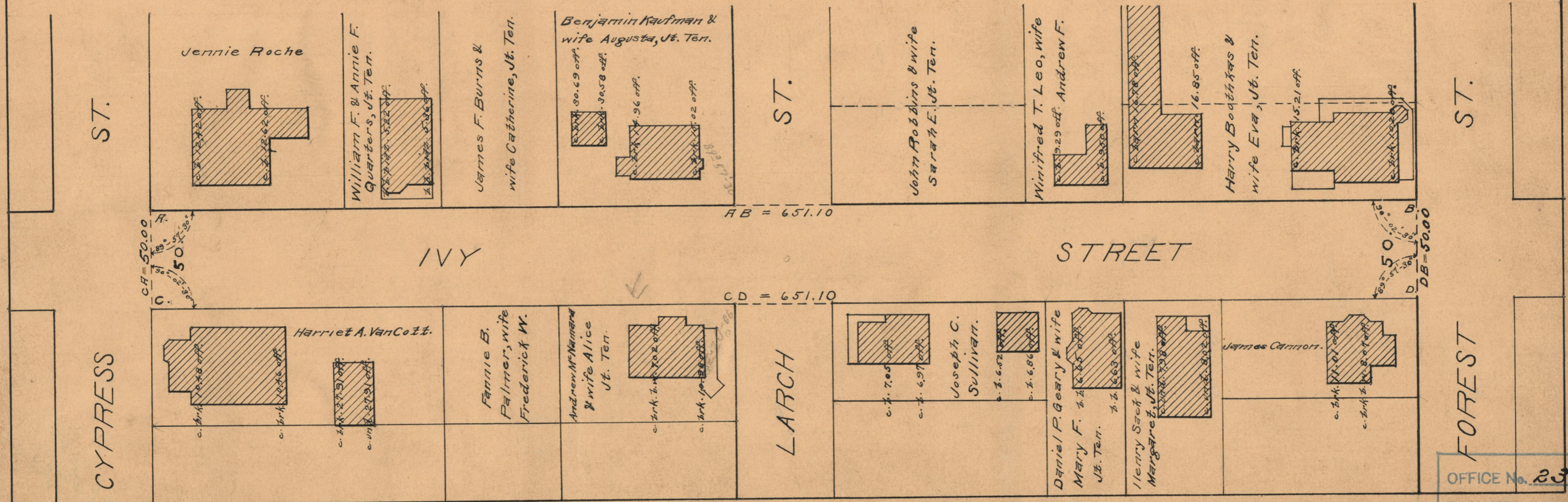
PLAT OF IVY STREET

FROM CYPRESS ST. TO FOREST ST.

SCALE 50 FEET PER INCH

DECLARED AND ESTABLISHED A PUBLIC HIGHWAY
BY RESOLUTION OF THE BOARD OF ALDERMEN

DECEMBER 15, 1927.



OFFICE No. 23668
 DRAWER " 73
 SHEET " B-28