

PLAT OF

LINDY AVENUE

FROM CHALKSTONE AVE. NORTHERLY ABOUT 144 FEET

SCALE 40 FEET PER INCH

DECLARED A PUBLIC HIGHWAY BY RESOLUTION

OF THE BOARD OF ALDERMEN

NOVEMBER 3, 1927

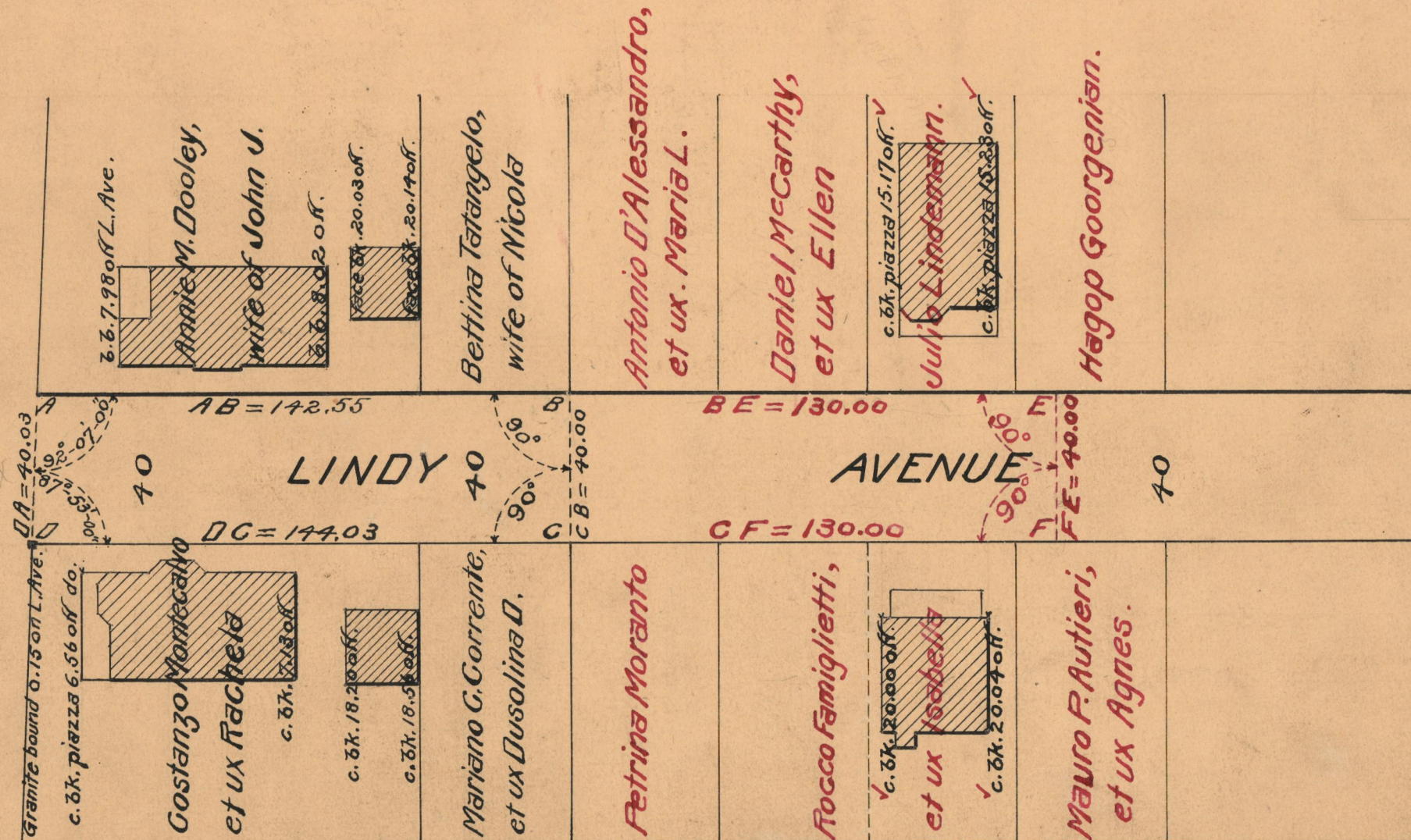
FROM RECEIVED PORTION 130 FEET NORTHERLY

DECLARED A PUBLIC HIGHWAY JUNE 4, 1928.



CHALKSTONE AVE.

AVE.



OFFICE No. 23667
 DRAWER " 73
 SHEET " B-27