

PLAT OF

SALINA STREET

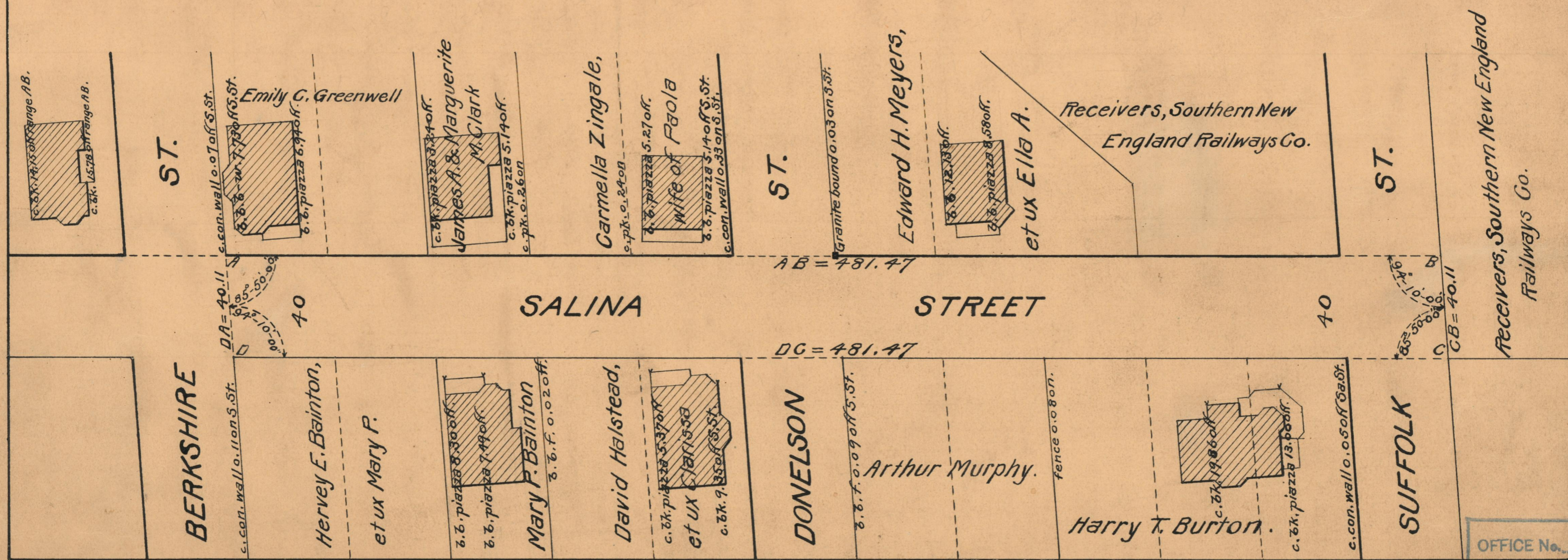
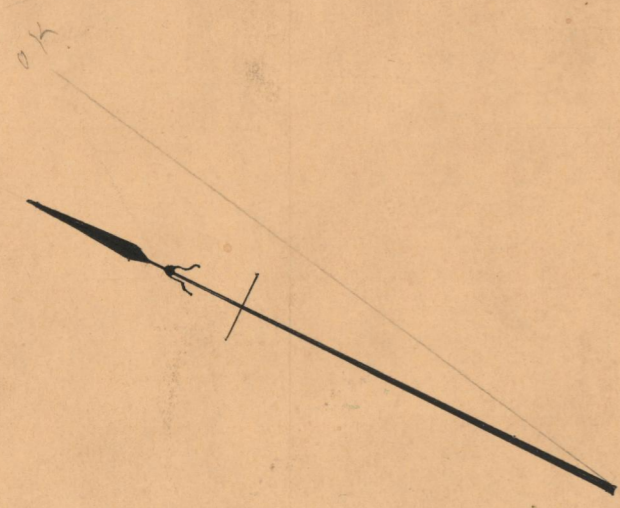
FROM BERKSHIRE ST. TO THE SOUTHERLY LINE OF SUFFOLK ST.

SCALE 40 FEET PER INCH

DECLARED A PUBLIC HIGHWAY BY RESOLUTION

OF THE BOARD OF ALDERMEN

OCTOBER 20, 1927



OFFICE No. 23666
 DRAWER # 73
 SHEET # B-26