

PROVIDENCE, R.I.
CITY ENGINEER'S OFFICE

STREET LINE DEPT.
Dec. 12, 1927.

050146

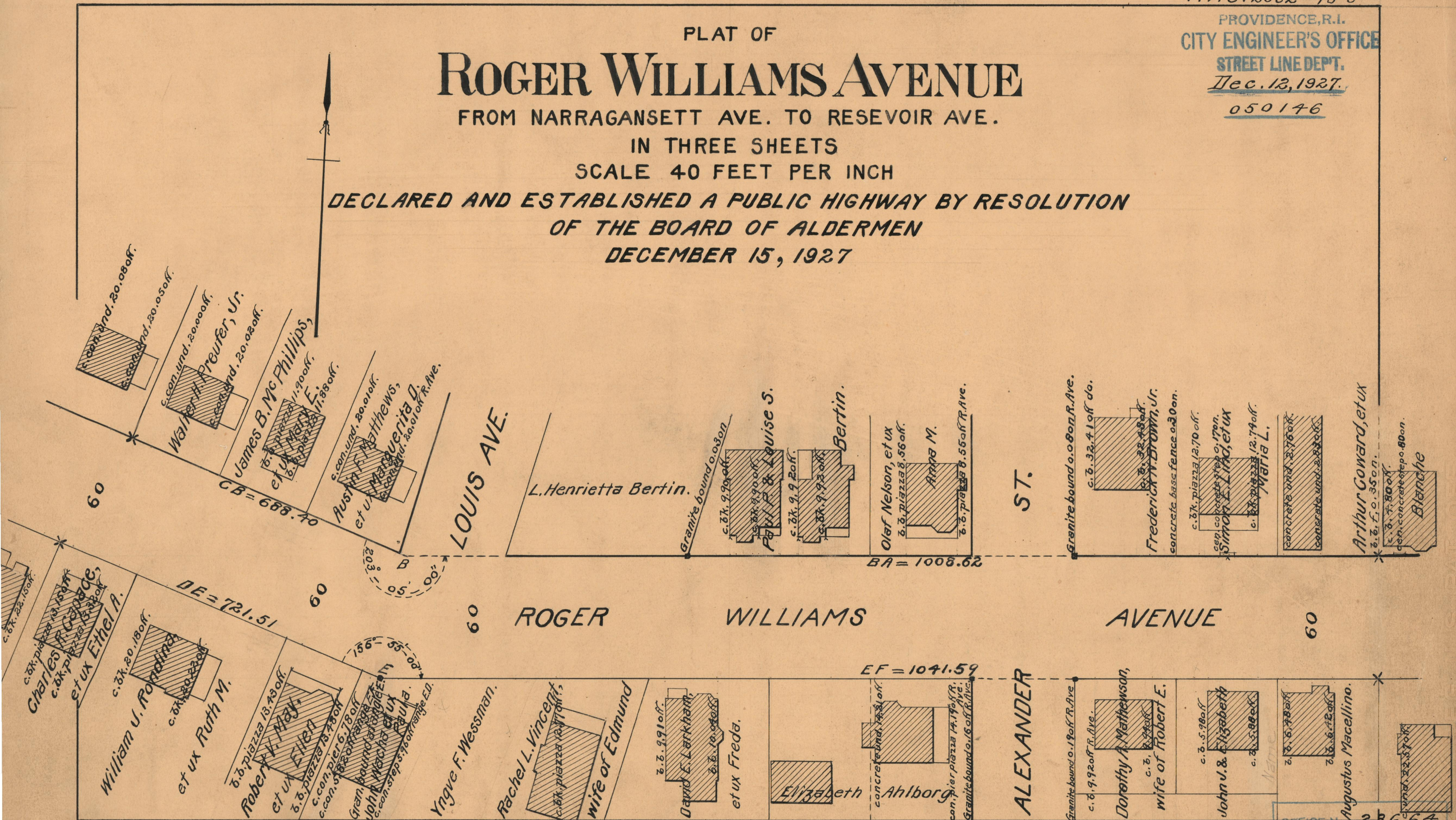
PLAT OF ROGER WILLIAMS AVENUE

FROM NARRAGANSETT AVE. TO RESEVOIR AVE.

IN THREE SHEETS

SCALE 40 FEET PER INCH

DECLARED AND ESTABLISHED A PUBLIC HIGHWAY BY RESOLUTION
OF THE BOARD OF ALDERMEN
DECEMBER 15, 1927



OFFICE No. 25664
 DRAWER " 73
 SHEET " B-24