

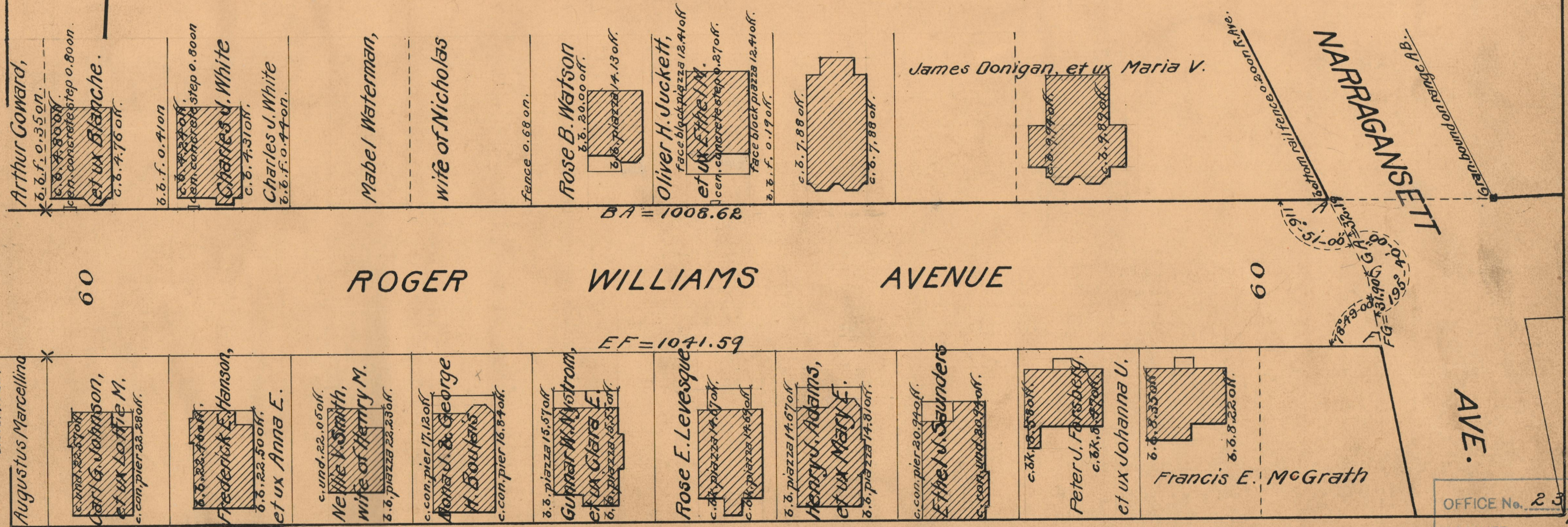
PLAT OF
ROGER WILLIAMS AVENUE

FROM NARRAGANSETT AVE. TO RESERVOIR AVE.

IN THREE SHEETS

SCALE 40 FEET PER INCH

DECLARED AND ESTABLISHED A PUBLIC HIGHWAY BY RESOLUTION
OF THE BOARD OF ALDERMEN
DECEMBER 15, 1927



OFFICE No. 23663
DRAWER " 73
SHEET " B-23