

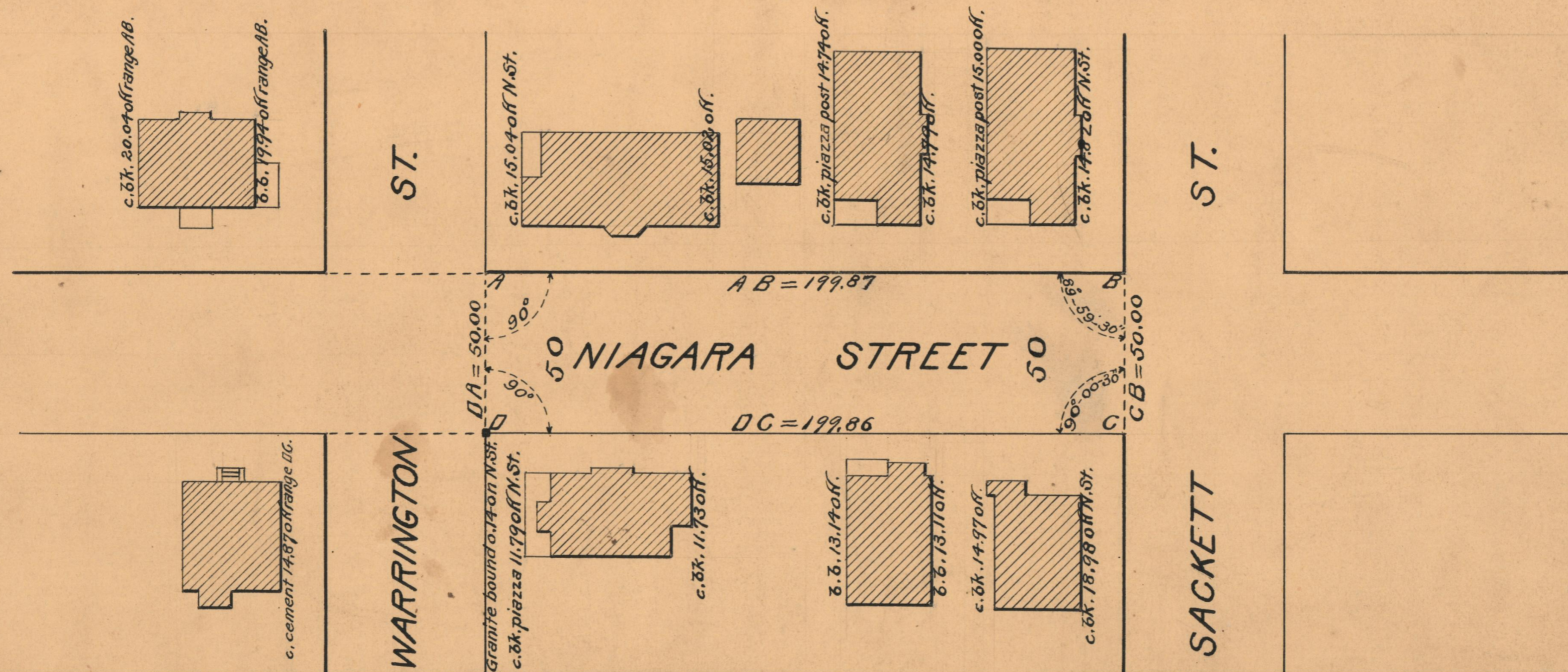
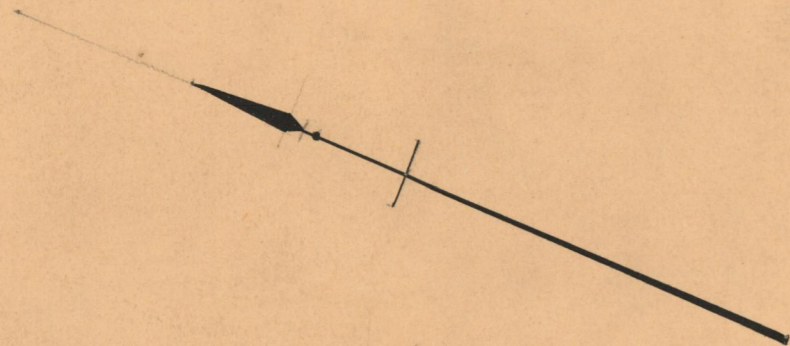
PLAT OF
NIAGARA STREET

FROM WARRINGTON ST. TO SACKETT ST.

SCALE 40 FEET PER INCH

DECLARED A PUBLIC HIGHWAY BY RESOLUTION
 OF THE BOARD OF ALDERMEN
 SEPTEMBER 1, 1927

PROVIDENCE, R.I.
 CITY ENGINEER'S OFFICE
 STREET LINE DEPT.
 Nov. 21, 1927.
050091



OFFICE No. 23659
 DRAWER 73
 SHEET B-22