

123-120

T.F.C. 2424-69

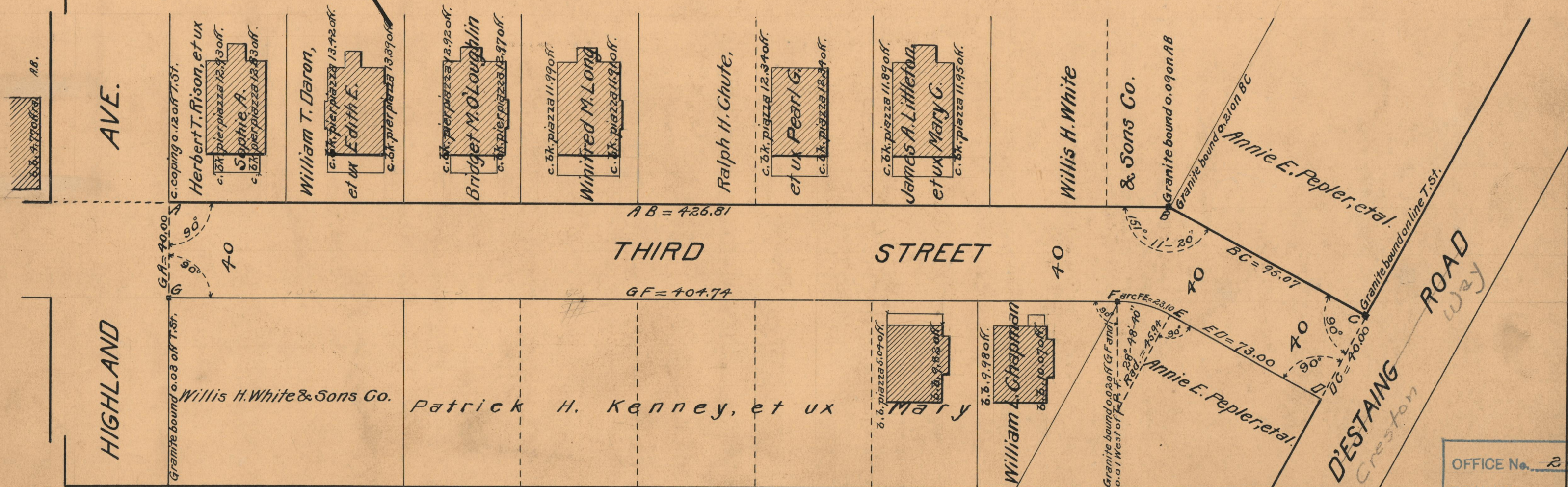
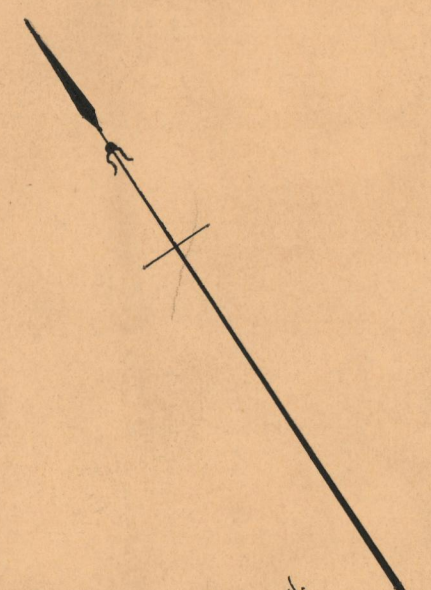
PROVIDENCE, R.I.  
CITY ENGINEER'S OFFICE

STREET LINE DEPT.

Nov. 21, 1927.

050090

PLAT OF  
**THIRD STREET**  
 FROM HIGHLAND AVE. TO D'ESTAING RD.  
 SCALE 40 FEET PER INCH  
 DECLARED A PUBLIC HIGHWAY BY RESOLUTION  
 OF THE BOARD OF ALDERMEN  
 OCTOBER 6, 1927



OFFICE No. 23658  
 DRAWER " 73  
 SHEET " B-21