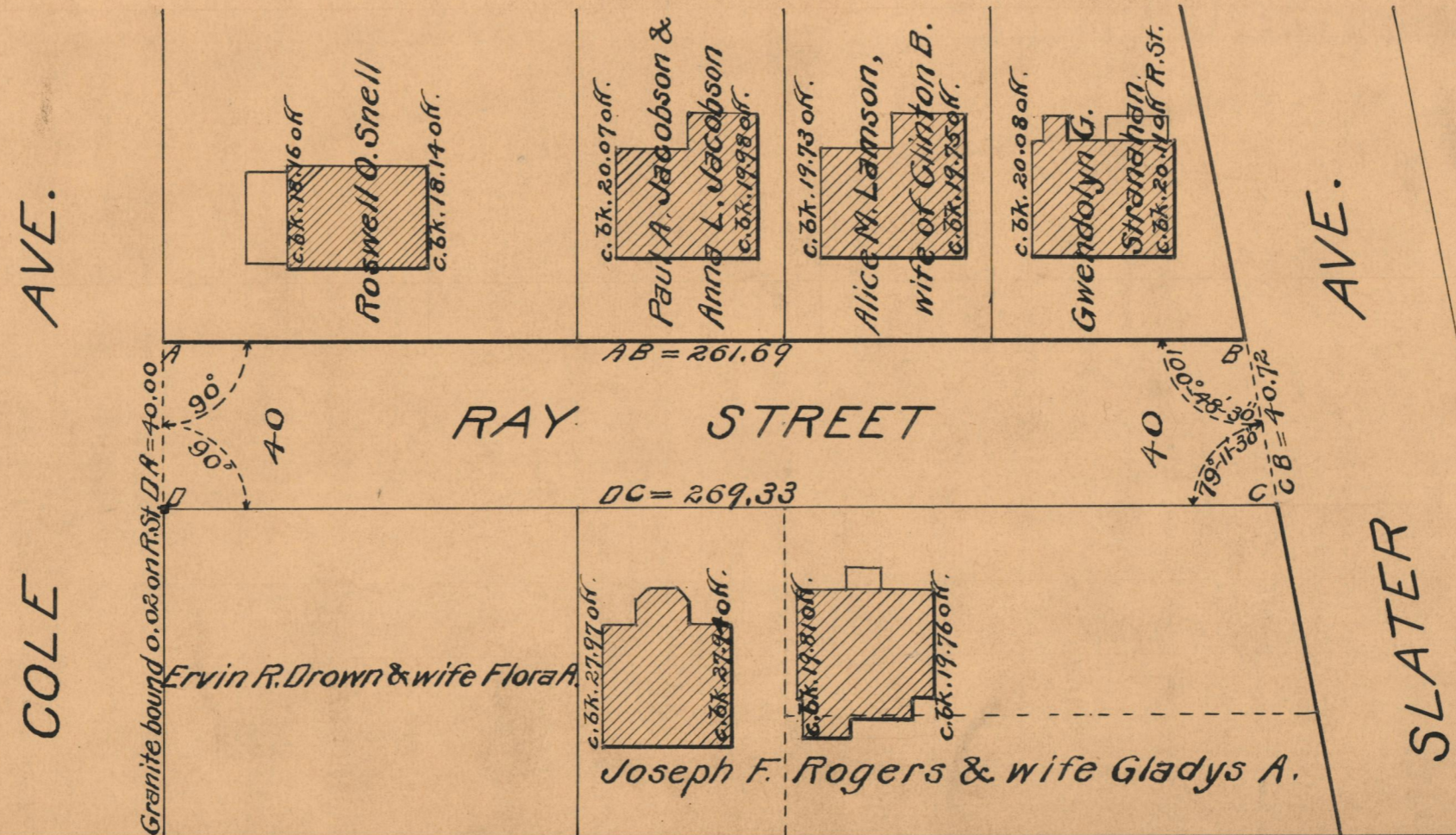
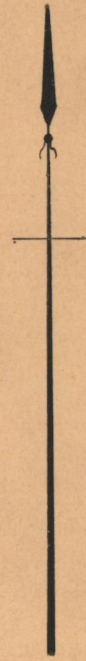


# PLAT OF RAY STREET

FROM COLE AVE. TO SLATER AVE.

SCALE 40 FEET PER INCH

DECLARED AND ESTABLISHED A PUBLIC HIGHWAY  
BY RESOLUTION OF THE BOARD OF ALDERMEN  
NOVEMBER 3, 1927



OFFICE No.	23651
DRAWER "	73
SHEET "	B-19