

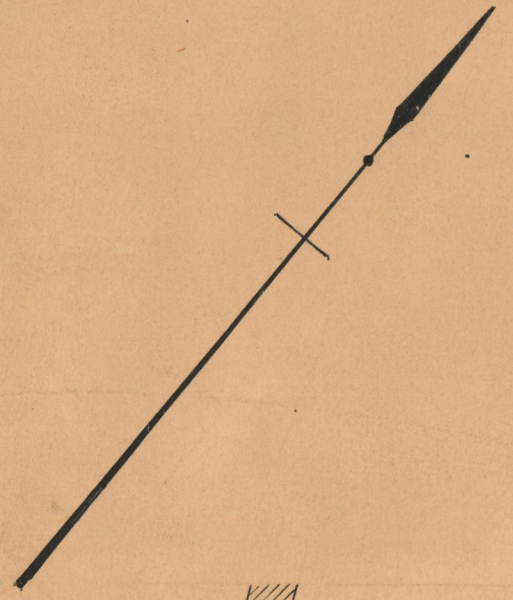
PROVIDENCE, R.I.  
CITY ENGINEER'S OFFICE  
STREET LINE DEPT.  
Oct. 31, 1927.  
050028

# PLAT OF STANSBURY STREET

FROM DOUGLAS AVE. TO GRAND BROADWAY

SCALE 60 FEET PER INCH

DECLARED AND ESTABLISHED A PUBLIC HIGHWAY  
BY RESOLUTION OF THE BOARD OF ALDERMEN  
SEPTEMBER 15, 1927



C i t y o f P r o v i d e n c e

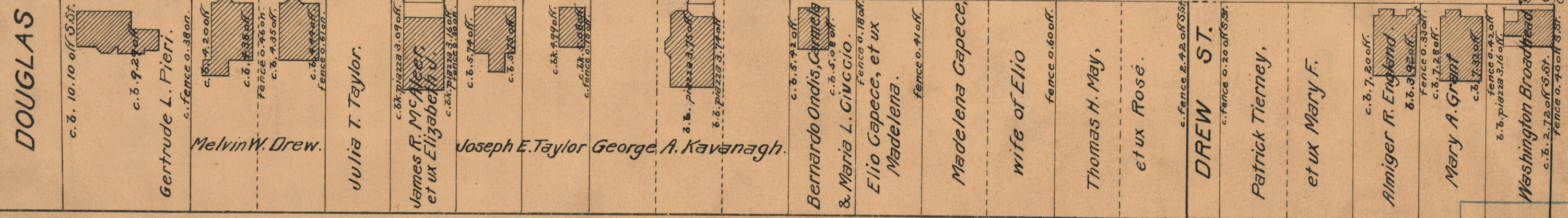
AB = 902.07

DC = 901.13

## STANSBURY STREET

VEAZIE ST.  
DOUGLAS AVE.

BROADWAY



OFFICE No. 23650  
 DRAWER " 73  
 SHEET " B-18