

PLAT OF

NELSON STREET

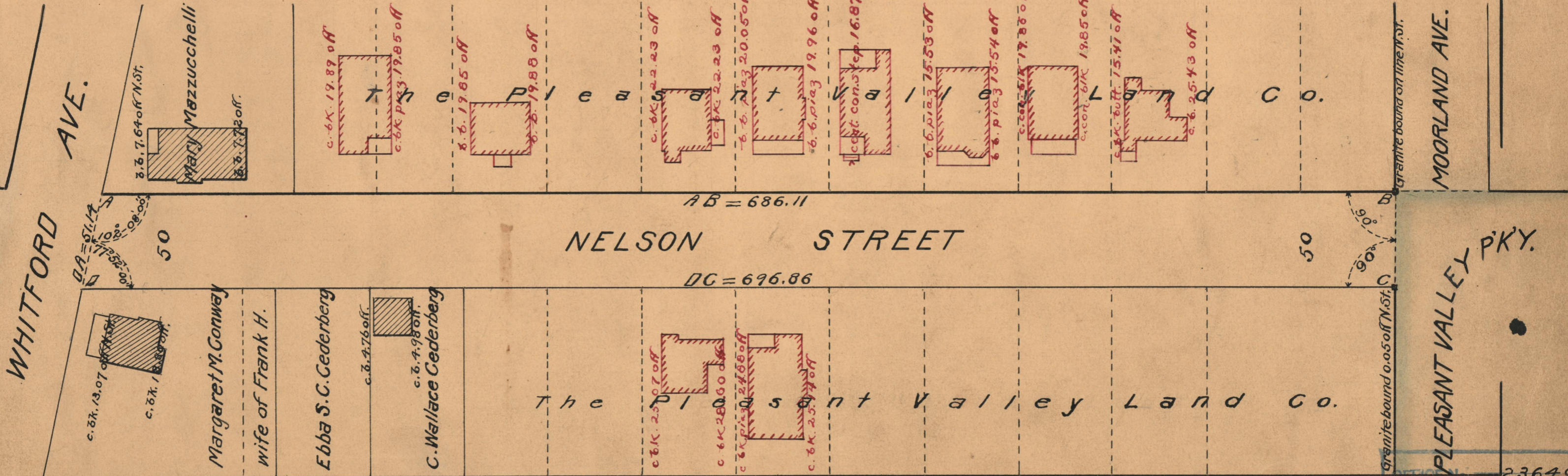
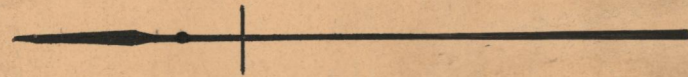
FROM WHITFORD AVE. TO PLEASANT VALLEY PARKWAY

SCALE 50 FEET PER INCH

DECLARED AND ESTABLISHED A PUBLIC HIGHWAY

BY RESOLUTION OF THE BOARD OF ALDERMEN

NOVEMBER 17, 1927



OFFICE No. 23649
 DRAWER 73
 SHEET B-17