

Note: The portion of South Main St. abandoned lies east of the line A.B.

This plat is a copy of
049894

PLAT OF SOUTH MAIN STREET

FROM COLLEGE ST. TO HOPKINS ST.

SCALE 40 FEET PER INCH

SHOWING PORTION ABANDONED BY RESOLUTION
OF THE BOARD OF ALDERMEN

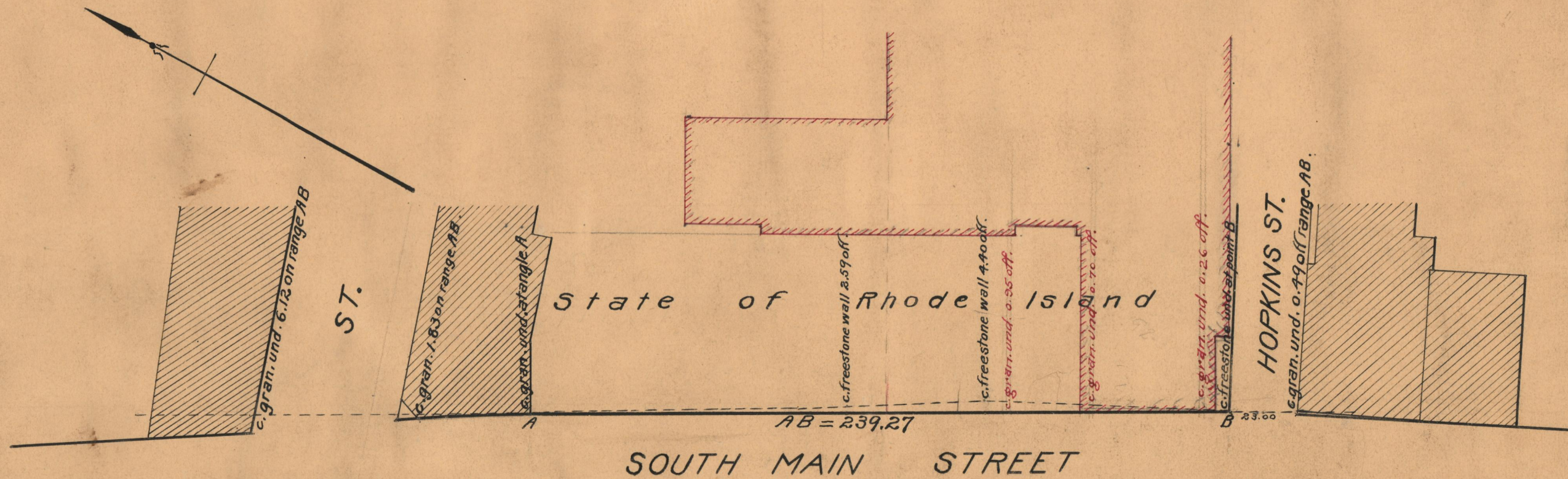
OCTOBER 6, 1927

PROVIDENCE, R.I.
CITY ENGINEER'S OFFICE

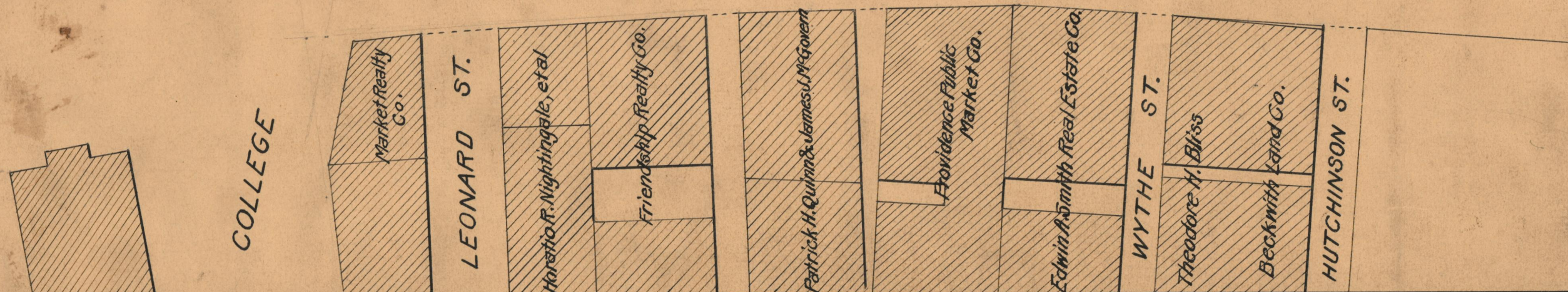
STREET LINE DEPT.

Sept. 1, 1927.

049894



SOUTH MAIN STREET



OFFICE No.	23648
DRAWER	73
SHEET	B-16