

PLAT OF

# HILLSIDE AVENUE

FROM PORTION ALREADY RECEIVED TO THE CITY LINE

IN TWO SHEETS

SCALE 40 FEET PER INCH

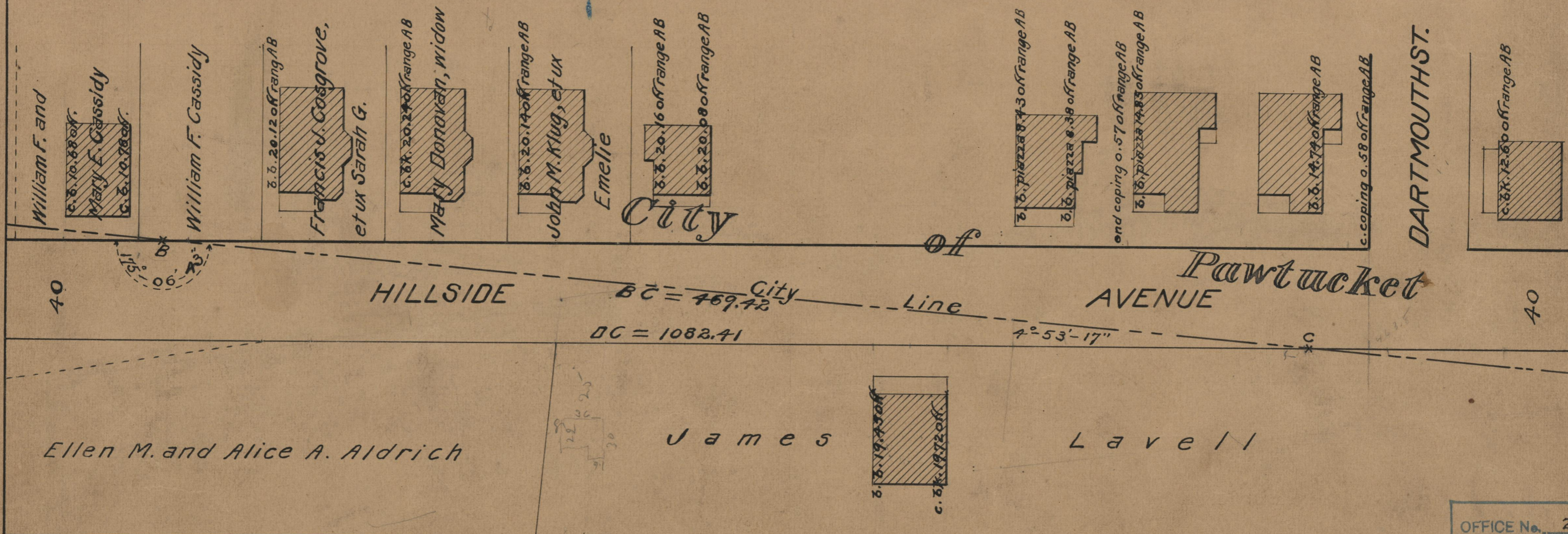
DECLARED AND ESTABLISHED A PUBLIC HIGHWAY

BY RESOLUTION OF THE BOARD OF ALDERMEN

OCTOBER 20, 1927

PROVIDENCE, R.I.  
CITY ENGINEER'S OFFICE  
STREET LINE DEPT.  
Oct. 21, 1927.

050006



OFFICE No.	23646
DRAWER "	73
SHEET "	B-15