

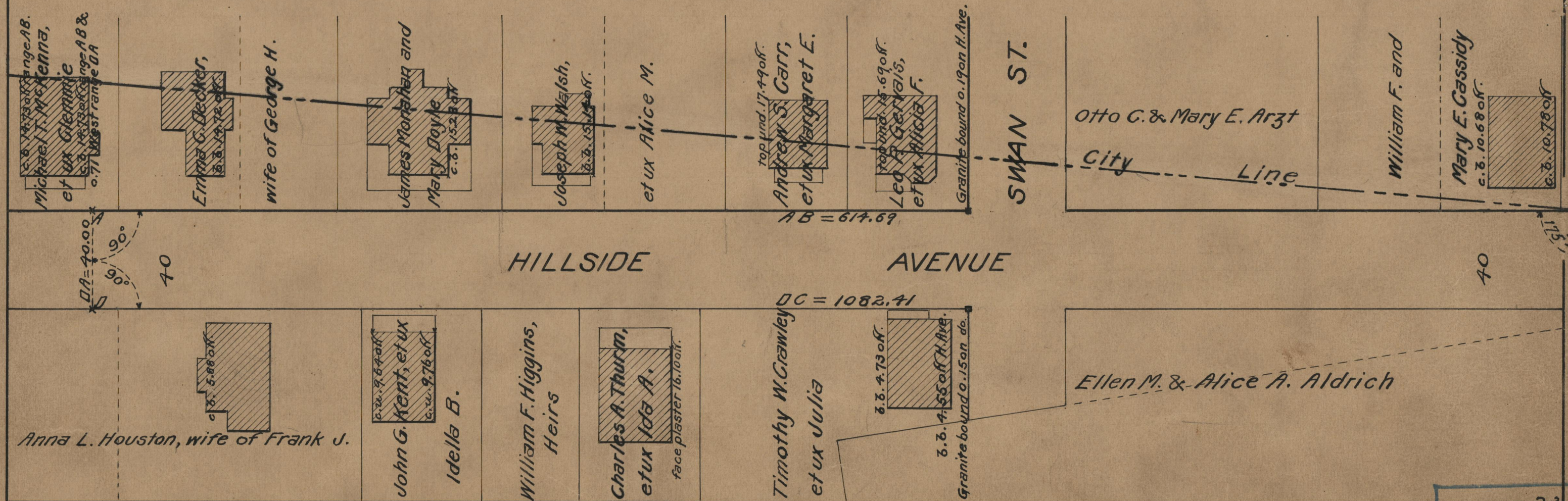
PLAT OF

HILLSIDE AVENUE

FROM PORTION ALREADY RECEIVED TO THE CITY LINE
IN TWO SHEETS

SCALE 40 FEET PER INCH

DECLARED AND ESTABLISHED A PUBLIC HIGHWAY
BY RESOLUTION OF THE BOARD OF ALDERMEN
OCTOBER 20, 1927



OFFICE No. 23645
 DRAWER " 73
 SHEET " B-14