

PLAT OF

BABCOCK STREET

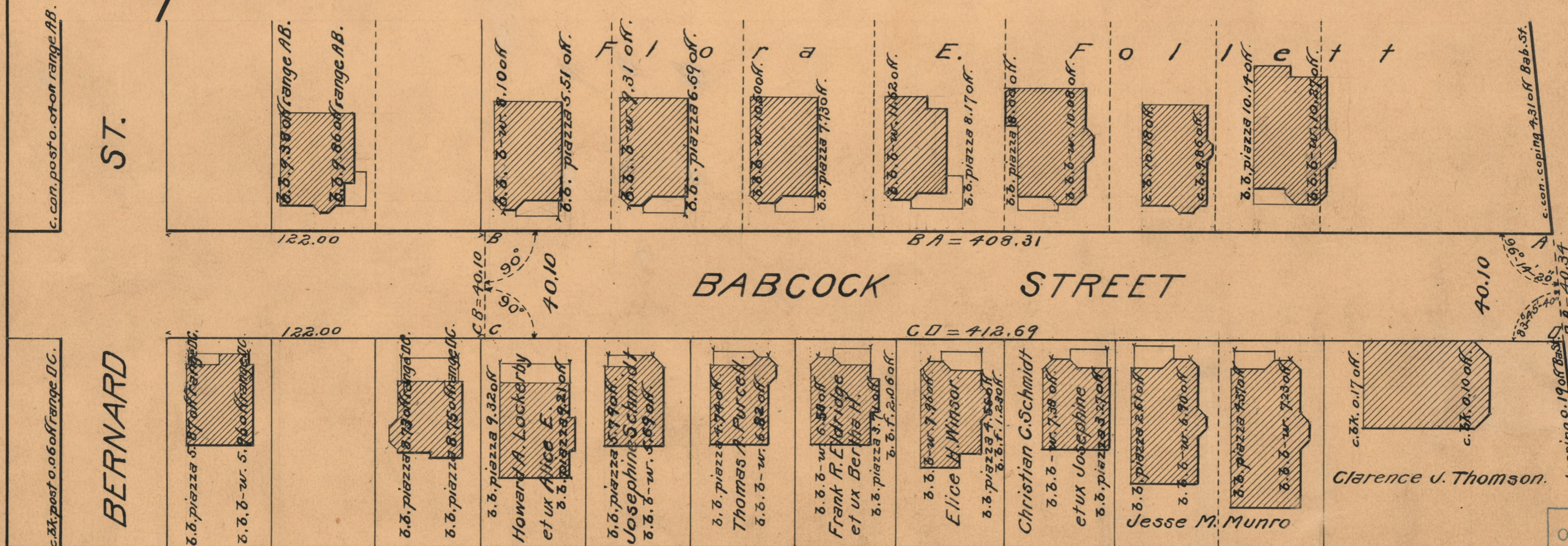
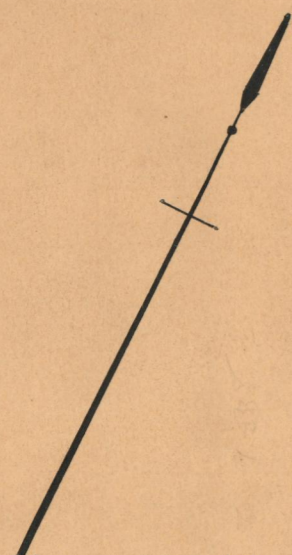
FROM BROAD ST. TO PORTION ALREADY RECEIVED

SCALE 40 FEET PER INCH

DECLARED AND ESTABLISHED A PUBLIC HIGHWAY

BY RESOLUTION OF THE BOARD OF ALDERMEN

SEPTEMBER 15, 1927



c. con. post o. 04 on range AB.

ST.

d. b. 7.380 off range AB.

d. b. 9.860 off range AB.

d. b. 8.10 off

d. b. piazza 5.51 off.

d. b. 8.31 off.

d. b. piazza 6.69 off.

d. b. 10.00 off.

d. b. piazza 7.130 off.

d. b. 11.020 off.

d. b. piazza 8.17 off.

d. b. piazza 18.08 off.

d. b. 10.00 off.

d. b. piazza 10.17 off.

d. b. 10.17 off.

d. b. 10.17 off.

c. con. coping 7.310 off Bab. St.

ST.

c. bk. post o. 06 off range DC.

BERNARD

d. b. piazza 5.870 off range DC.

d. b. 5.260 off range DC.

d. b. piazza 8.730 off range DC.

d. b. piazza 8.750 off range DC.

d. b. piazza 9.320 off

Howard A. Lockerby et ux Alice E.

d. b. piazza 5.790 off

Josephine Schmidt

d. b. piazza 4.740 off

Thomas A. Purcell.

d. b. 6.580 off

Frank R. E. Ydrige

et ux Bertha H.

d. b. 7.960 off

Elice H. Winsor.

d. b. piazza 7.380 off

Christian C. Schmidt

d. b. 7.380 off

et ux Josephine

d. b. piazza 2.610 off

Jesse M. Munro

d. b. 6.900 off

d. b. piazza 7.570 off

d. b. 7.230 off

c. bk. 0.17 off.

Clarence J. Thomson.

c. bk. 0.10 off.

end coping 9.190 off Bab. St.

OFFICE No. 23639
 DRAWER " 73
 SHEET " B-13