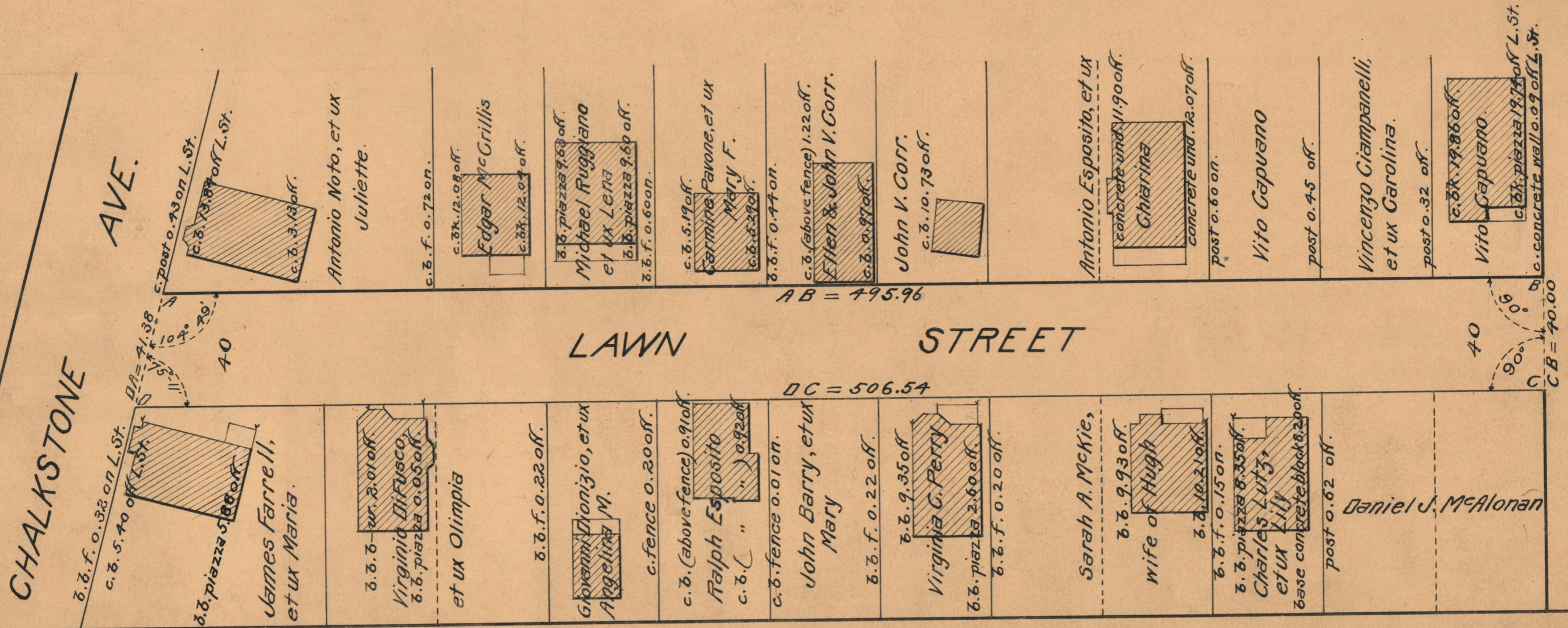
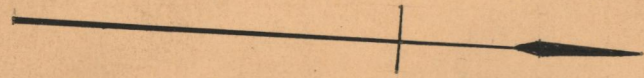


PLAT OF LAWN STREET

FROM CHALKSTONE AVE. TO MOLLOY ST.

SCALE 40 FEET PER INCH

DECLARED AND ESTABLISHED A PUBLIC HIGHWAY
BY RESOLUTION OF THE BOARD OF ALDERMEN
SEPTEMBER 15, 1927



OFFICE NO. 23606
DRAWER 73
SHEET B-9