

Note: The area declared a public highway is indicated by the letters ABCA.
The lines thus fixed conform to the Deed recorded in Deed Book 700 page 345, in the office of the Recorder of Deeds.

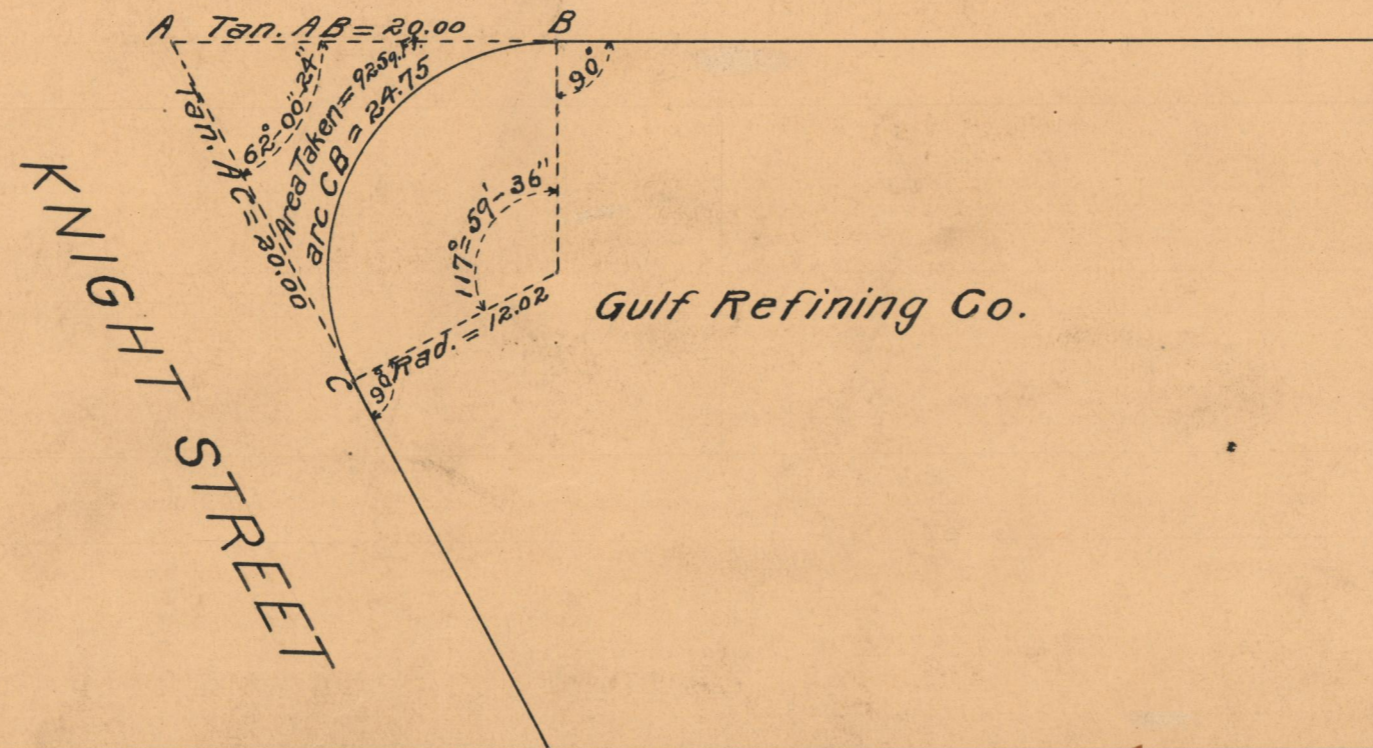
PROVIDENCE, R.I.
CITY ENGINEER'S OFFICE
STREET LINE DEPT.
Aug. 26, 1927.
049892

PLAT OF LAND AT CORNER OF
WESTMINSTER STREET
AND
KNIGHT STREET

SCALE 10 FEET PER INCH
DECLARED A PUBLIC HIGHWAY BY RESOLUTION
OF THE BOARD OF ALDERMEN
AUGUST 4, 1927



WESTMINSTER STREET



OFFICE No. 23602
DRAWER " 73
SHEET " B-7