

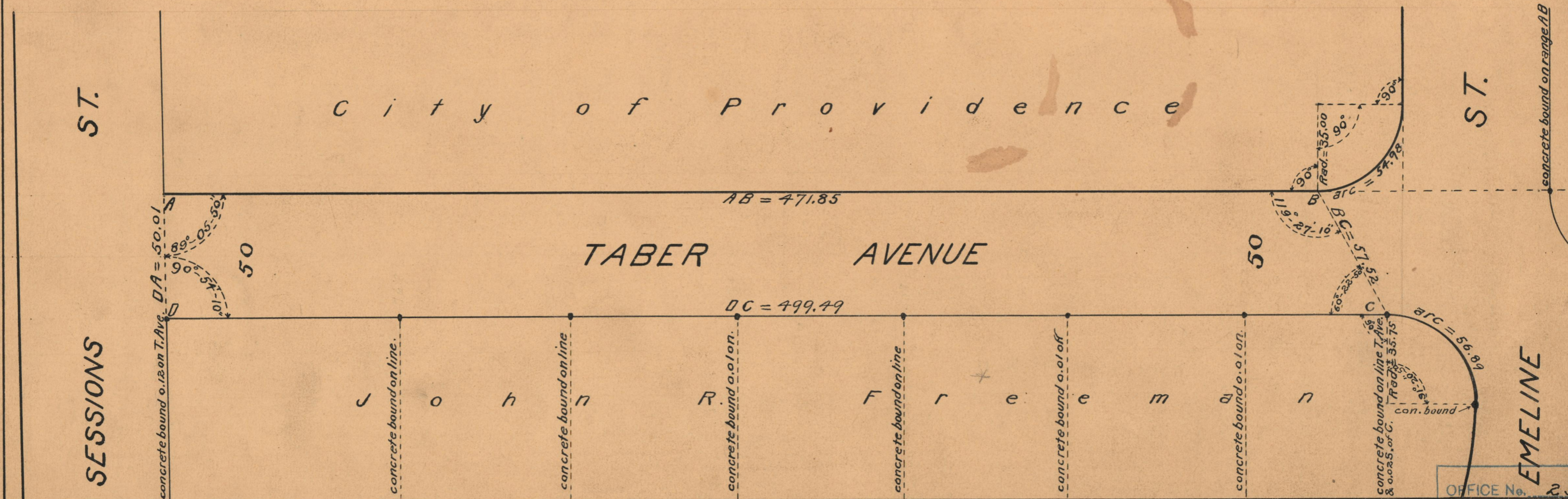
PROVIDENCE, R.I.  
CITY ENGINEER'S OFFICE

STREET LINE DEPT.

Aug. 15, 1927.

049850

PLAT OF  
**TABER AVENUE**  
 FROM SESSION ST. TO EMELINE ST.  
 SCALE 40 FEET PER INCH  
 DECLARED A PUBLIC HIGHWAY BY RESOLUTION  
 OF THE BOARD OF ALDERMEN  
 JUNE 16, 1927



OFFICE No. 23592  
 DRAWER " 73  
 SHEET " B-6