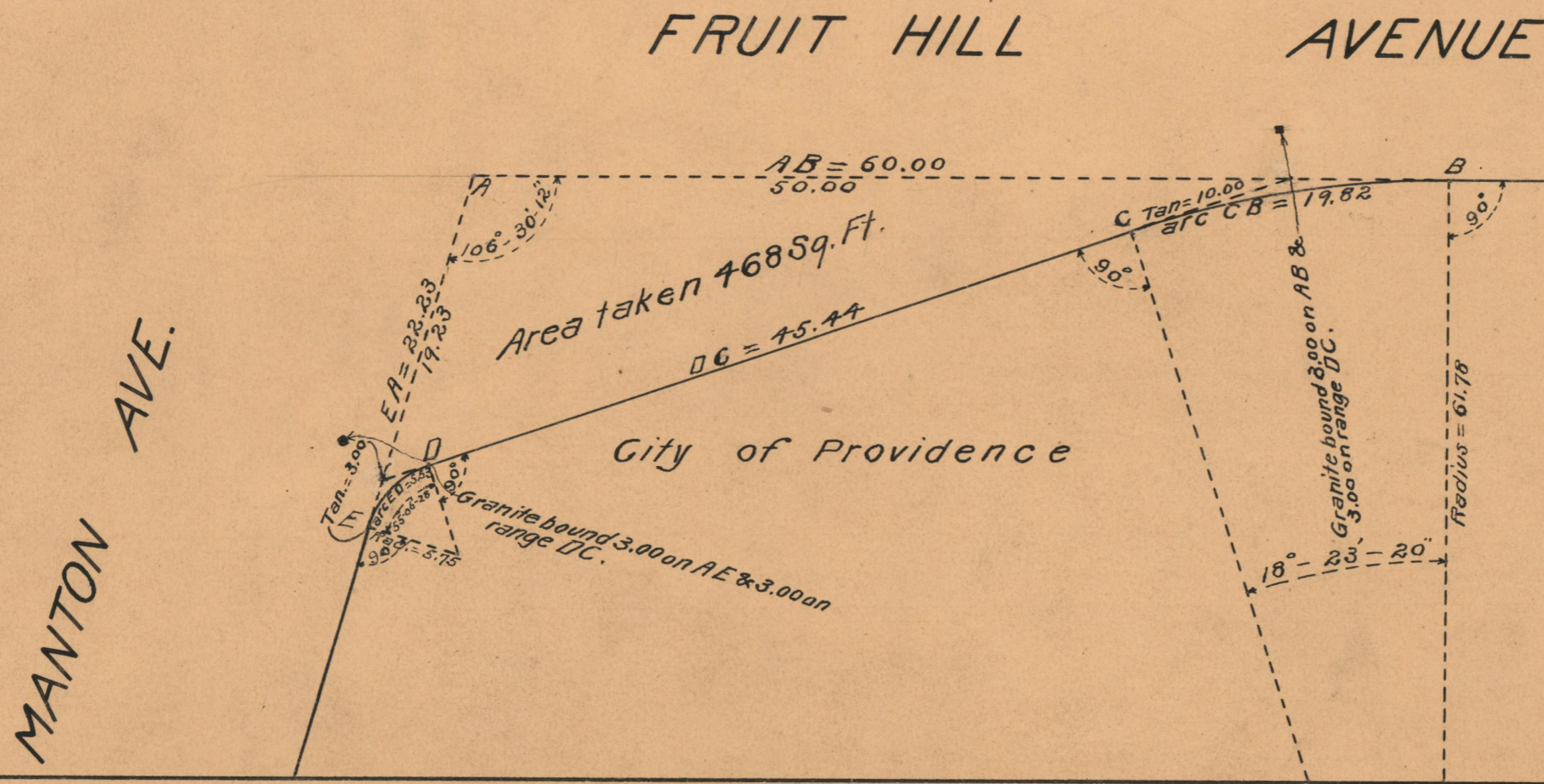
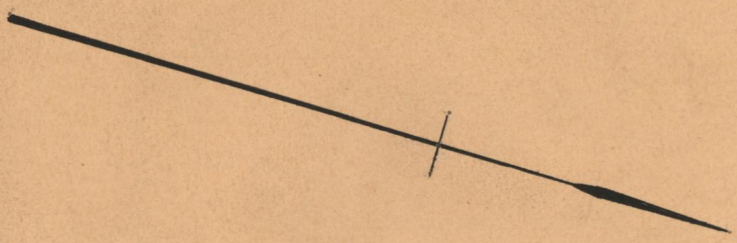


PROVIDENCE, R.I.
CITY ENGINEER'S OFFICE
STREET LINE DEPT.
Aug. 15, 1927.
049849

Note: The area declared a public highway
is indicated by the letters ABCDEA.
The lines thus fixed conform with Plat
049650 recorded in Plat Book B7, page
82, in the office of the Recorder of Deeds.

PLAT OF FRUIT HILL AVENUE

AT MANTON AVE.
SCALE 10 FEET PER INCH
DECLARED A PUBLIC HIGHWAY BY RESOLUTION
OF THE BOARD OF ALDERMEN
JULY 7, 1927



OFFICE No.	23591
DRAWN	73
SHEET	B-5