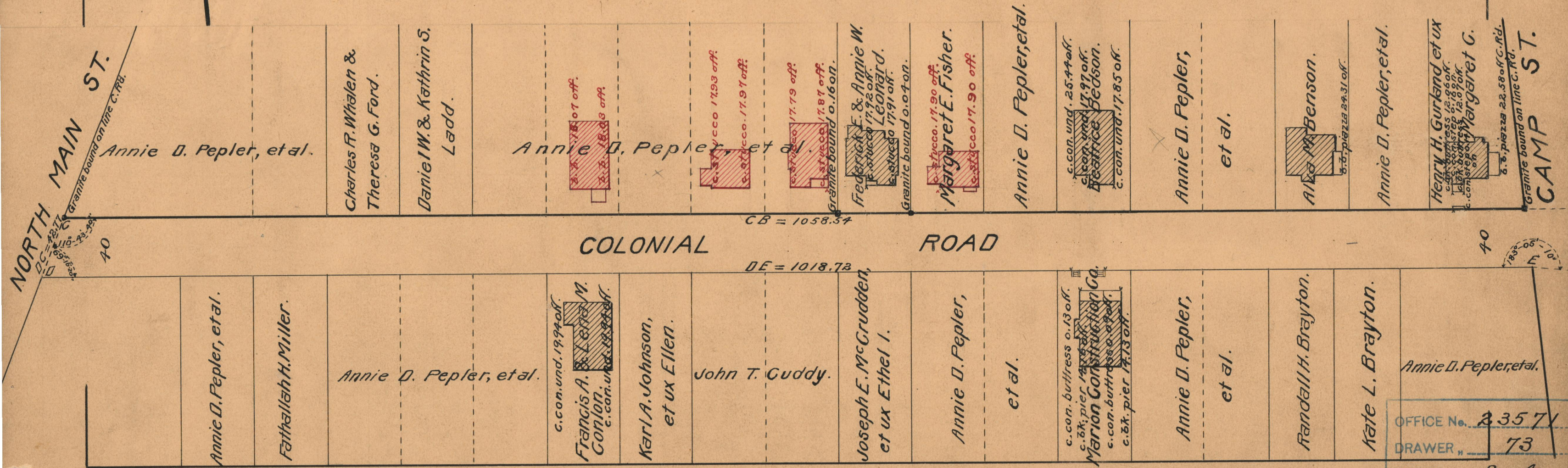


PLAT OF COLONIAL ROAD

FROM SUMMIT AVE. TO NORTH MAIN ST.
IN TWO SHEETS
SCALE 60 FEET PER INCH
DECLARED A PUBLIC HIGHWAY BY RESOLUTION
OF THE BOARD OF ALDERMEN
APRIL 7, 1927

PROVIDENCE, R.I.
CITY ENGINEER'S OFFICE
STREET LINE DEPT.
July 28, 1927.
049768



OFFICE No. 2357
 DRAWER " 73
 SHEET " B-4