

T.F.C. 2213-102

PROVIDENCE, R.I.
CITY ENGINEER'S OFFICE
STREET LINE DEPT.
July 28, 1927.
049766.

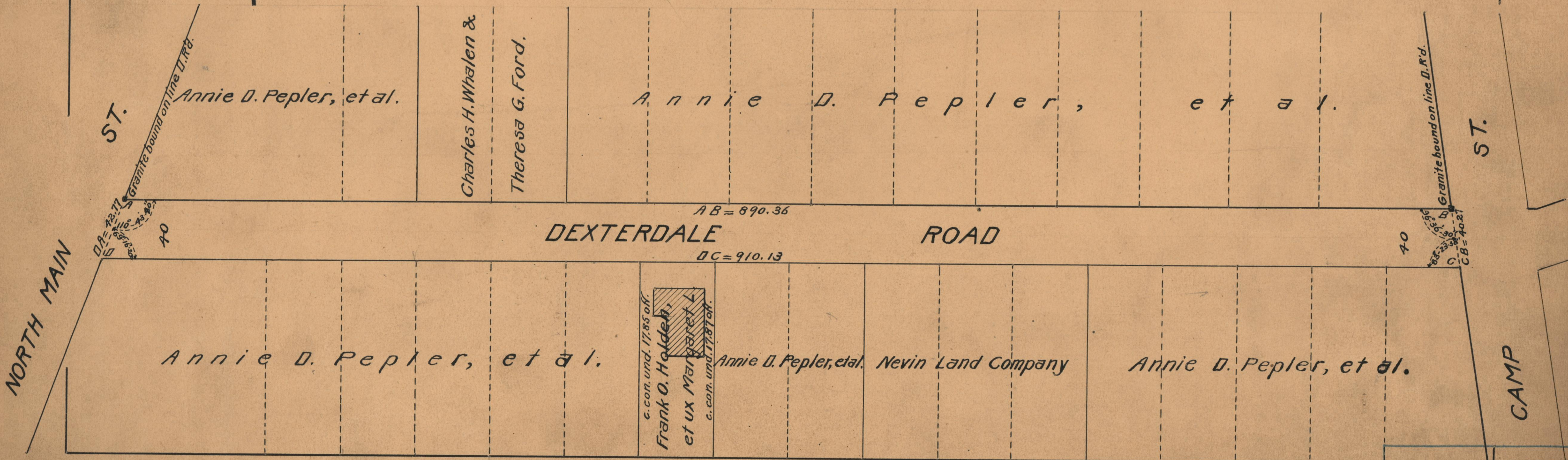
PLAT OF
DEXTERDALE ROAD

FROM NORTH MAIN ST. TO CAMP ST.

SCALE 60 FEET PER INCH

DECLARED A PUBLIC HIGHWAY BY RESOLUTION
OF THE BOARD OF ALDERMEN

APRIL 7, 1927



OFFICE No. 23569
DRAWER " 73
SHEET " B-2