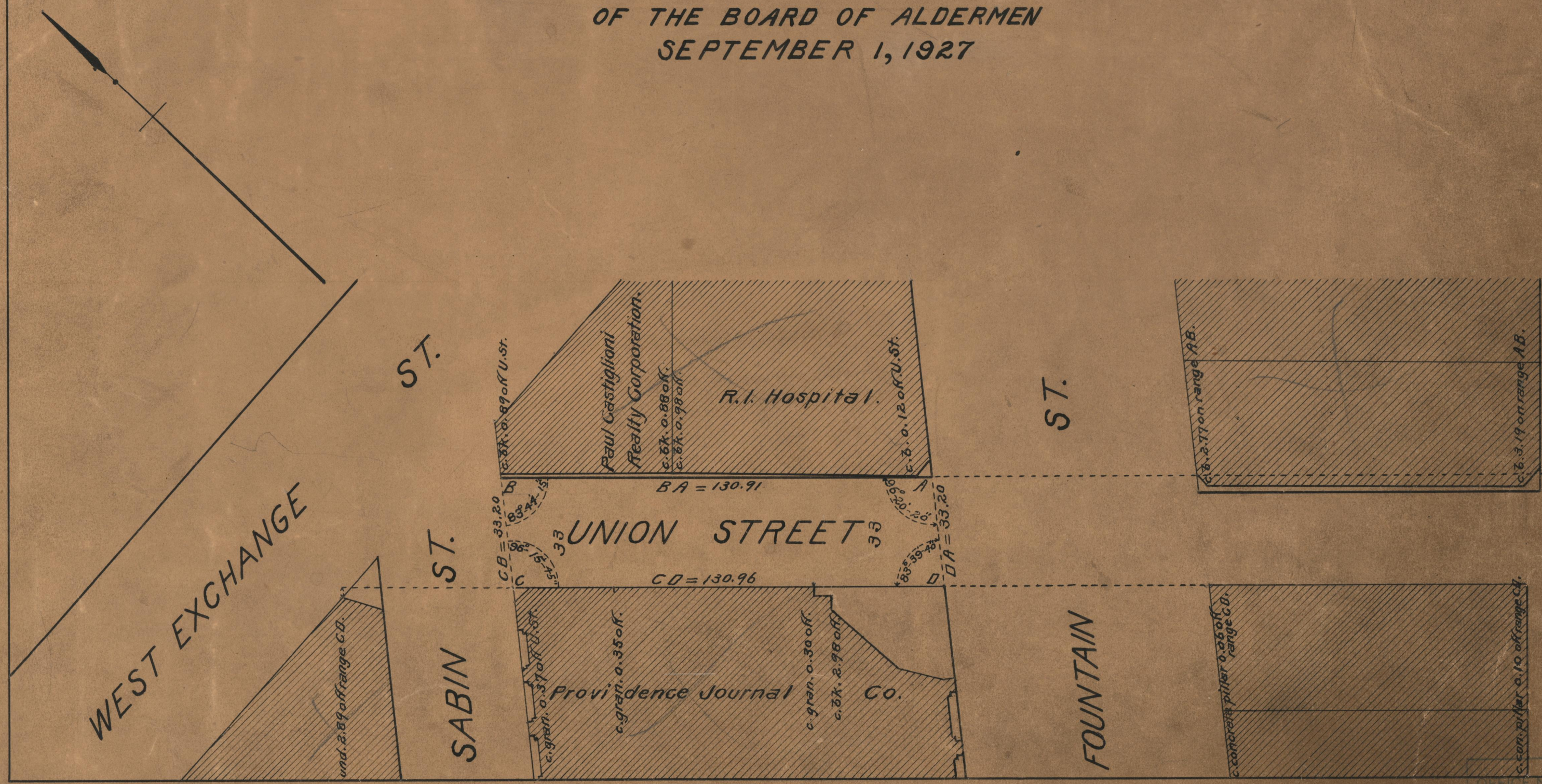


Note: The area declared a public highway is indicated by the letters ABCD.
 The lines thus fixed conform to plat 049653 in the office of the City Engineer.

PLAT OF
UNION STREET
 FROM FOUNTAIN ST. TO SABIN ST.
 SCALE 30 FEET PER INCH
 DECLARED A PUBLIC HIGHWAY BY RESOLUTION
 OF THE BOARD OF ALDERMEN
 SEPTEMBER 1, 1927

PROVIDENCE, R.I.
 CITY ENGINEER'S OFFICE
 STREET LINE DEPT.
July 15, 1927.
049738



73
 B1

OFFICE No. 235

DRAWER

73
 B1