

T.F.C. 2496-114

PROVIDENCE, R.I.  
CITY ENGINEER'S OFFICE

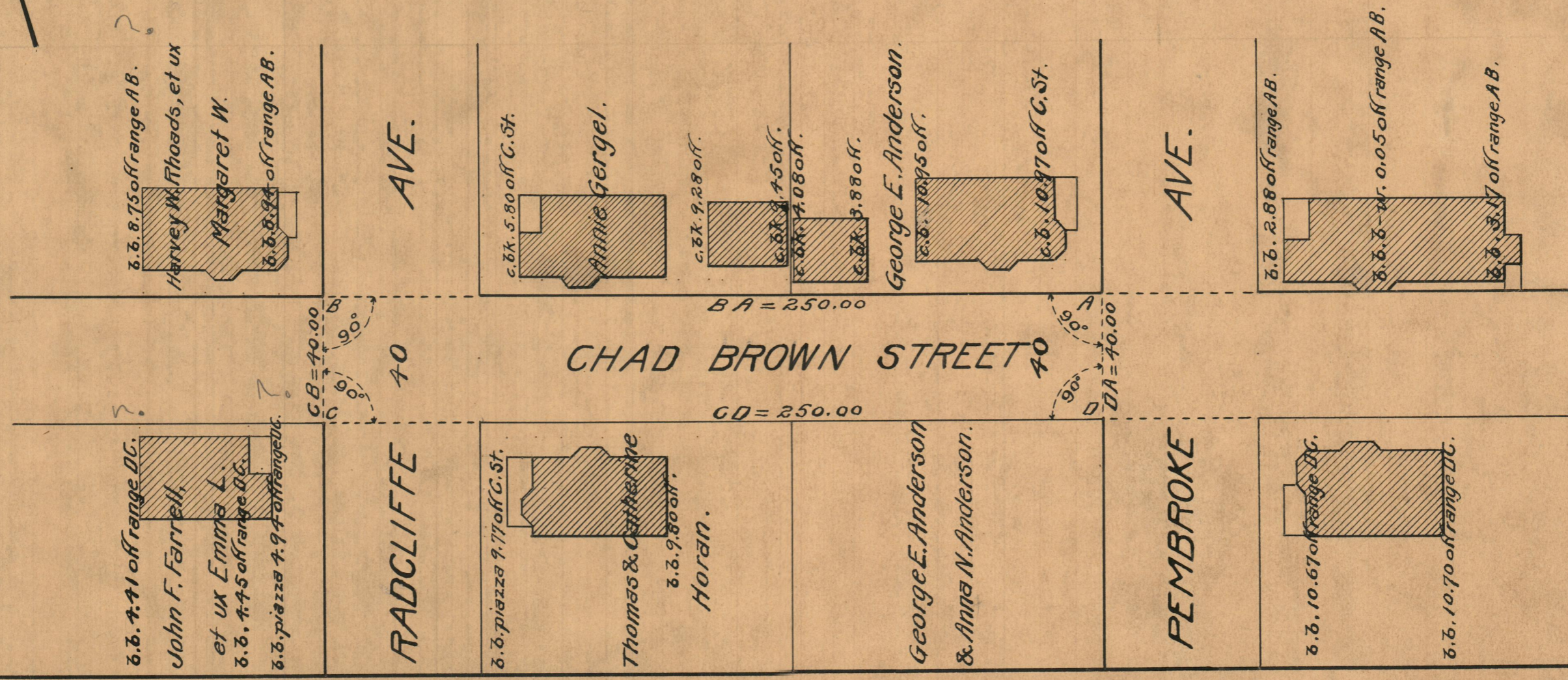
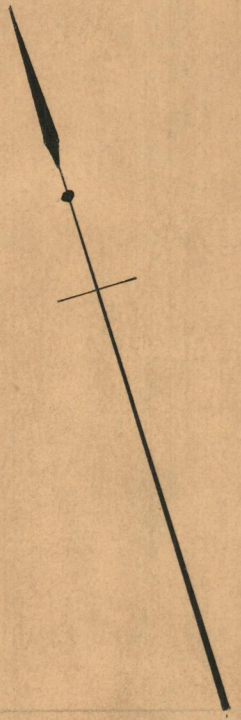
STREET LINE DEPT.

July 1, 1927.

049709

PLAT OF  
**CHAD BROWN STREET**  
FROM PEMBROKE AVE. TO WESTERLY LINE OF RADCLIFFE AVE.  
SCALE 40 FEET PER INCH

DECLARED A PUBLIC HIGHWAY BY RESOLUTION  
OF THE BOARD OF ALDERMEN  
APRIL 7, 1927



OFFICE No. 23547  
 DRAWER " 73  
 SHEET " A-99