

PROVIDENCE, R.I.
CITY ENGINEER'S OFFICE

STREET LINE DEPT.

July 15, 1927.

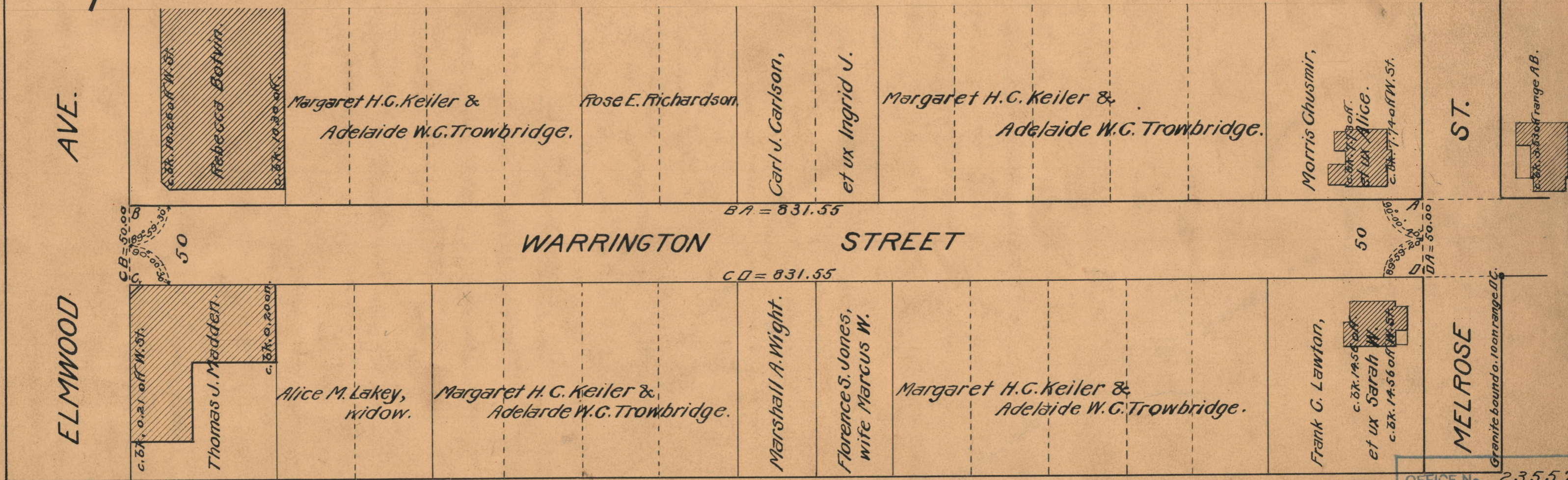
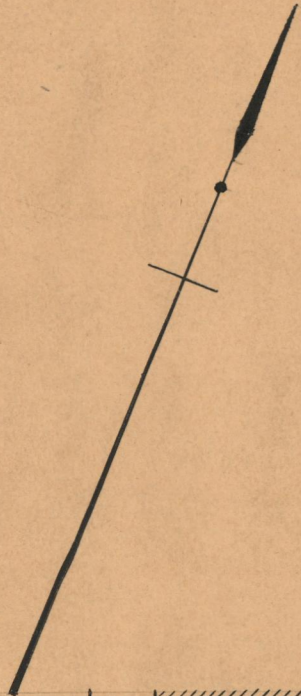
049737

PLAT OF WARRINGTON STREET

FROM MELROSE ST. TO ELMWOOD AVE.

SCALE 60 FEET PER INCH

DECLARED A PUBLIC HIGHWAY BY RESOLUTION
OF THE BOARD OF ALDERMEN
JANUARY 6, 1927



OFFICE No. 23557
 DRAWER " 73
 SHEET " A-100