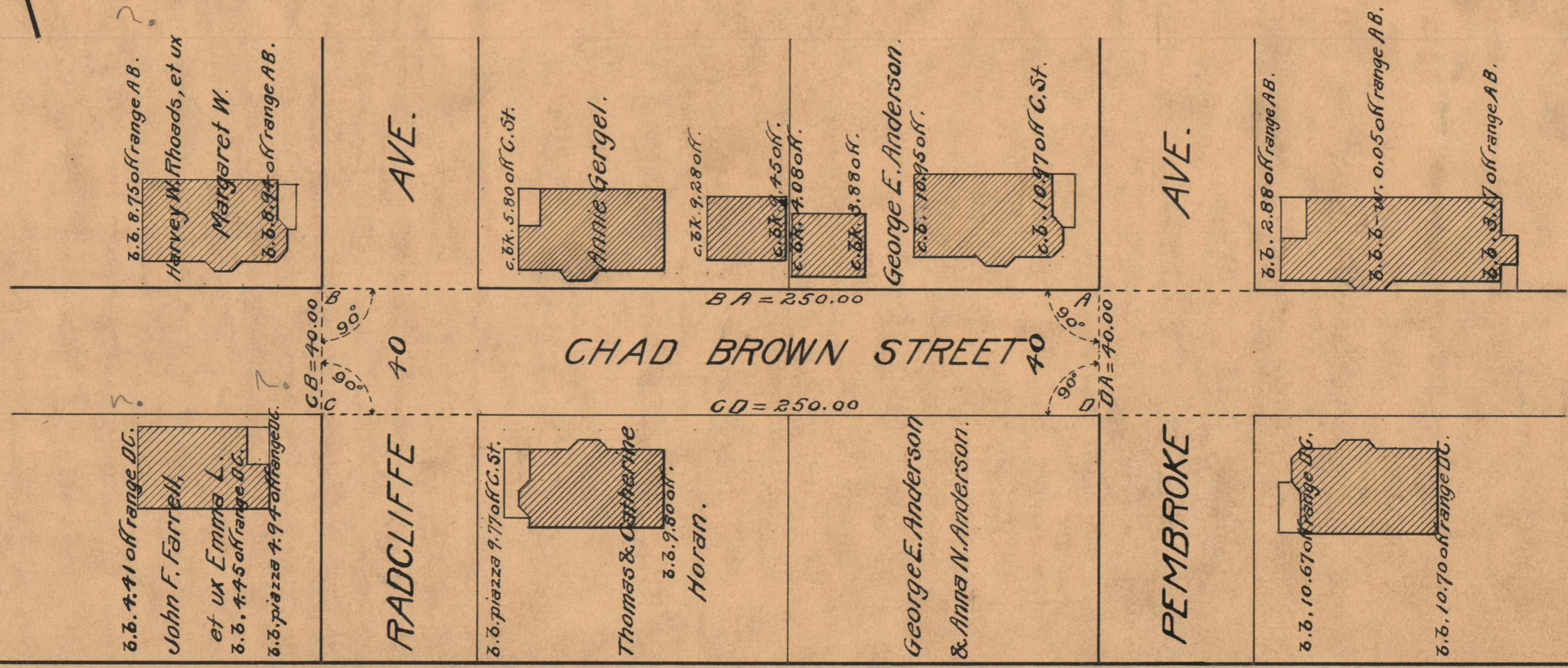
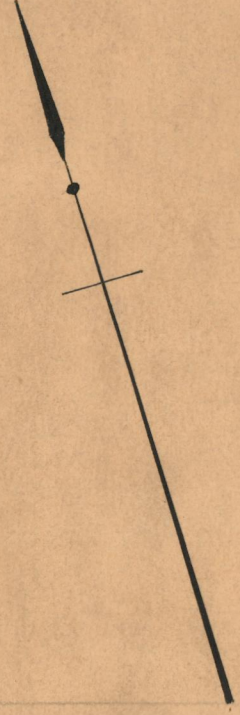


T.F.C. 2496-114
 PROVIDENCE, R.I.
 CITY ENGINEER'S OFFICE
 STREET LINE DEPT.
 July 1, 1927.
 049709

PLAT OF
CHAD BROWN STREET
 FROM PEMBROKE AVE. TO WESTERLY LINE OF RADCLIFFE AVE.
 SCALE 40 FEET PER INCH
 DECLARED A PUBLIC HIGHWAY BY RESOLUTION
 OF THE BOARD OF ALDERMEN
 APRIL 7, 1927



OFFICE No. 23547
 DRAWER " 73
 SHEET " A-99