

T. F. C. 2372-111

PROVIDENCE, R.I.  
CITY ENGINEER'S OFFICE

STREET LINE DEPT.

July 1, 1927.

049708

PLAT OF

# SLATER AVENUE

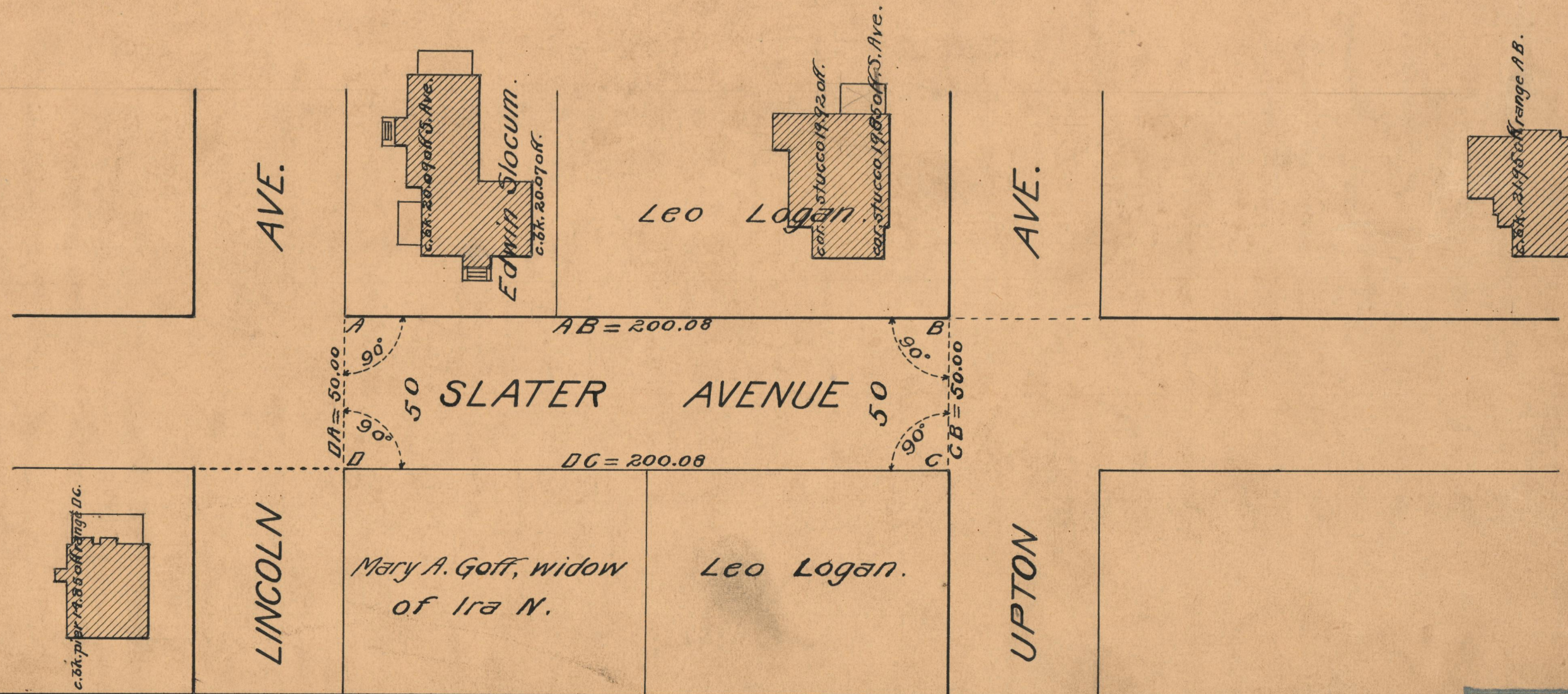
FROM LINCOLN AVE. TO UPTON AVE.

SCALE 40 FEET PER INCH

DECLARED A PUBLIC HIGHWAY BY RESOLUTION

OF THE BOARD OF ALDERMEN

JUNE 2, 1927



OFFICE No. 23546  
 DRAWER 73  
 SHEET A-98