

PROVIDENCE, R.I.
CITY ENGINEER'S OFFICE

STREET LINE DEPT.

JULY 1, 1927.

049707

PLAT OF

GLEN ROAD

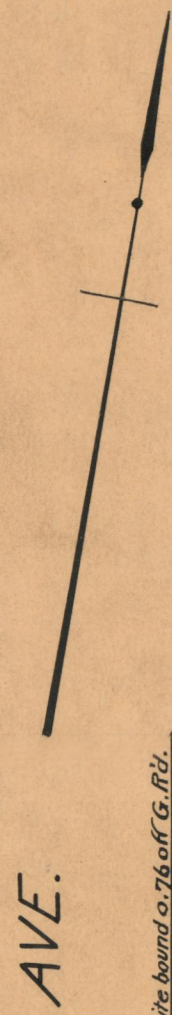
FROM COLE AVE. TO SLATER AVE.

SCALE 40 FEET PER INCH

DECLARED AND ESTABLISHED A PUBLIC HIGHWAY

BY RESOLUTION OF THE BOARD OF ALDERMEN

JUNE 16, 1927



Granite bound 0.20 off range AB.

AVE.

Granite bound 0.76 off G. Rd.

c. bk. 2.70 off G. Rd.

c. bk. 9.39 off.

John R. Freeman.

John F. O'Donnell.

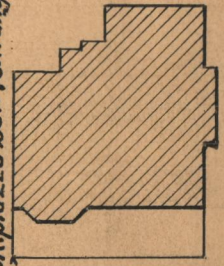
John R. Freeman.

Mary A. Goff,

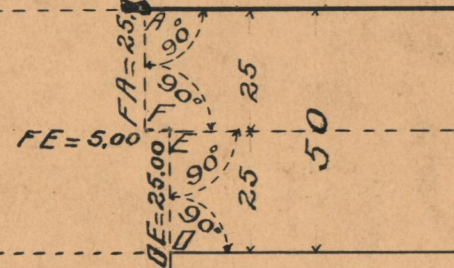
wife Ira N.

AVE.

c. bk. piazza 25.07 off range AB



AB = 450.00



GLEN ROAD



DC = 445.00

Granite bound 0.38 off range DC.

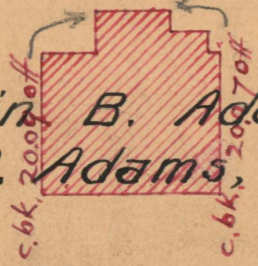
COLE



c. bk. 20.19 off

c. bk. 20.16 off

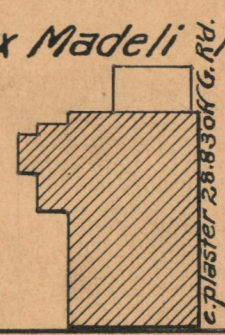
Benjamin B. Adams 1/2
Benjamin B. Adams, Trustee 1/2



c. bk. 20.00 off

c. bk. 20.70 off

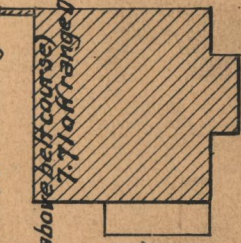
Ira L. Letts, et ux Madeline.



c. plaster 28.83 off G. Rd.

SLATER

Granite bound 0.06 on range DC.
c. bk. wall 0.09 on " " "
c. bk. wall 7.74 off range DC.
c. bk. (above half course) 7.71 off range DC.



OFFICE No. 23545
DRAWER 73
SHEET A-97