

PLAT OF CHATHAM STREET

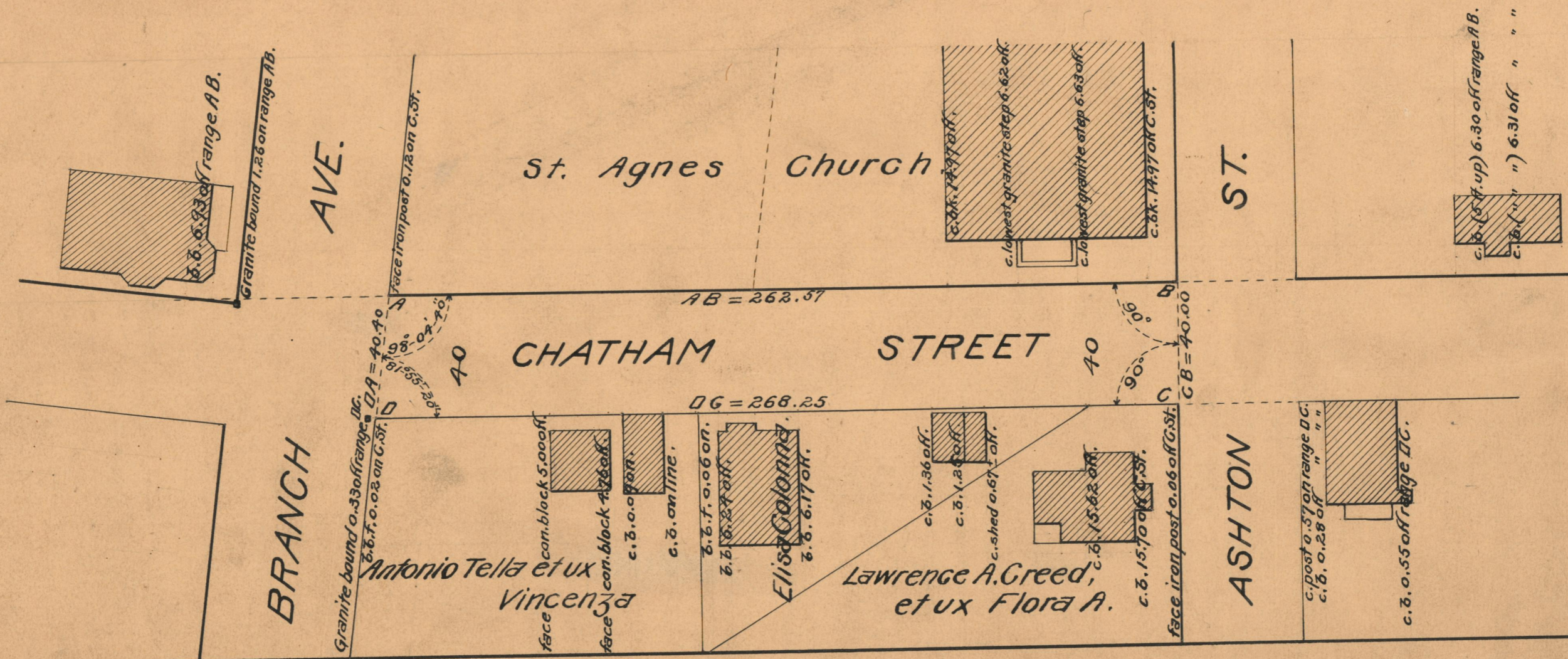
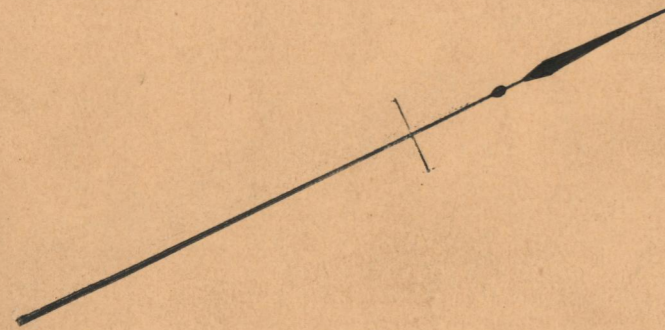
FROM BRANCH AVE. TO ASHTON ST.

SCALE 40 FEET PER INCH

DECLARED AND ESTABLISHED A PUBLIC HIGHWAY
 BY RESOLUTION OF THE BOARD OF ALDERMEN

JULY 7, 1927

262.57
 268.25
 2)530.82
 265.41



OFFICE NO. 23536
 DRAWER " 73
 SHEET " A-96