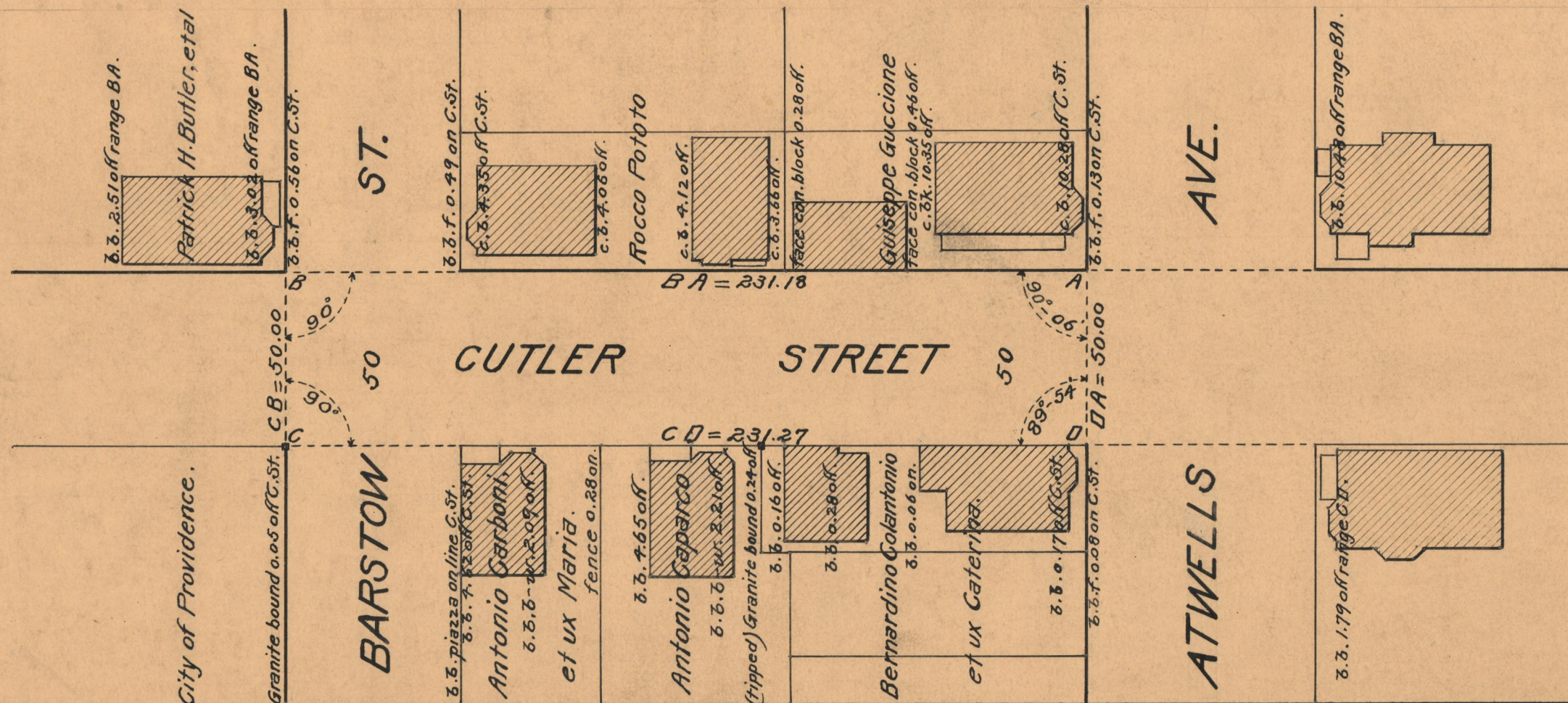
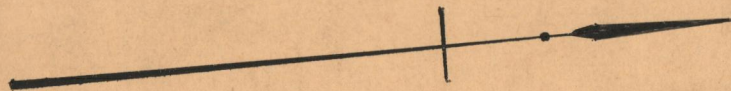


PLAT OF
CUTLER STREET
 FROM ATWELLS AVE. TO SOUTH LINE OF BARSTOW ST.
 SCALE 40 FEET PER INCH
 ESTABLISHED A PUBLIC HIGHWAY BY RESOLUTION
 OF THE BOARD OF ALDERMEN
 JULY 7, 1927



OFFICE No. 23535
 DRAWER 73
 SHEET A-95