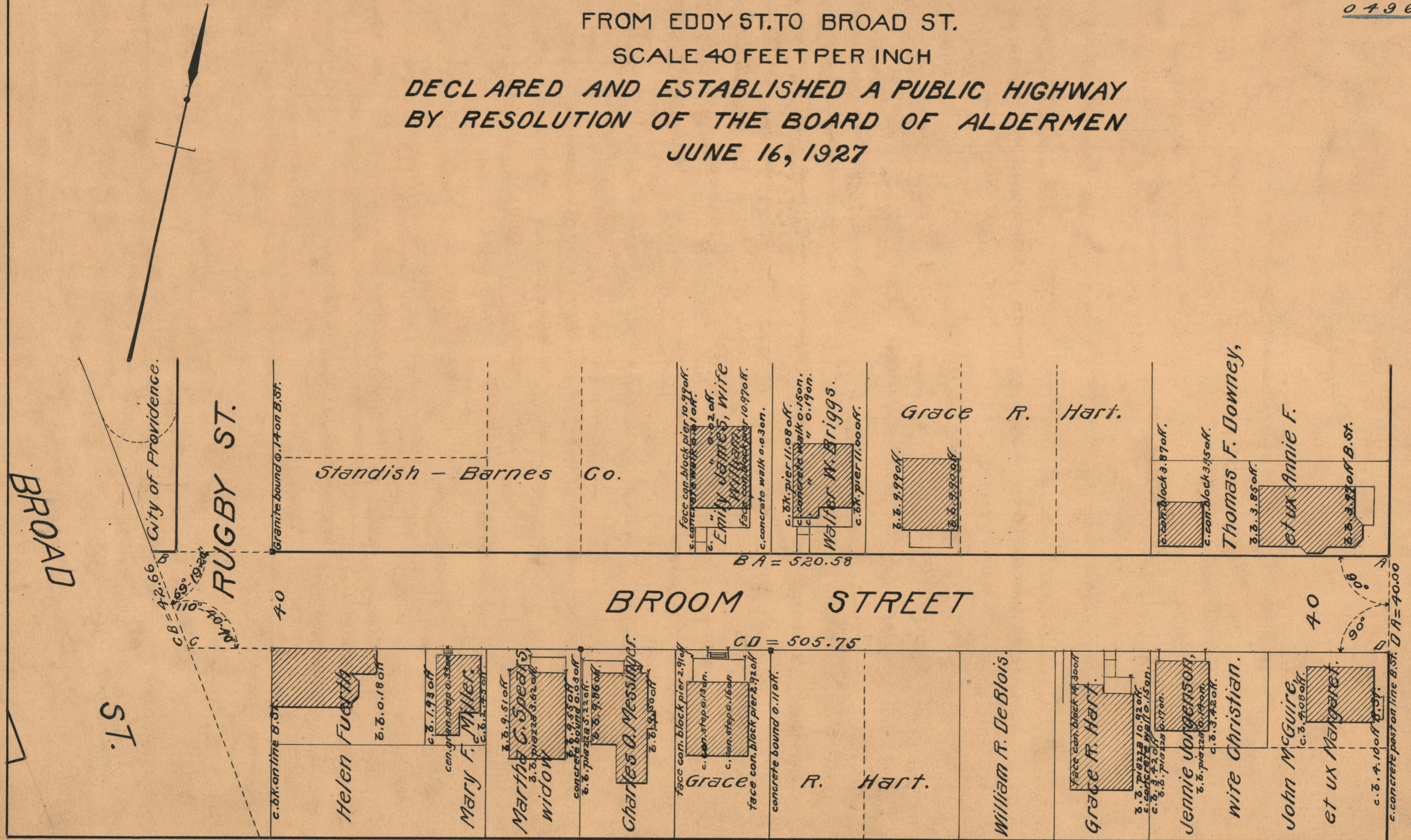


# PLAT OF BROOM STREET

FROM EDDY ST. TO BROAD ST.

SCALE 40 FEET PER INCH

DECLARED AND ESTABLISHED A PUBLIC HIGHWAY  
BY RESOLUTION OF THE BOARD OF ALDERMEN  
JUNE 16, 1927



BA = 520.58

CD = 505.75

c. concrete post on line B.St. DA = 40.00

OFFICE No.	23527
DRAWER	73
SHEET	A-93