

PLAT OF NELSON STREET

FROM SMITH ST. TO WHITFORD AVE.

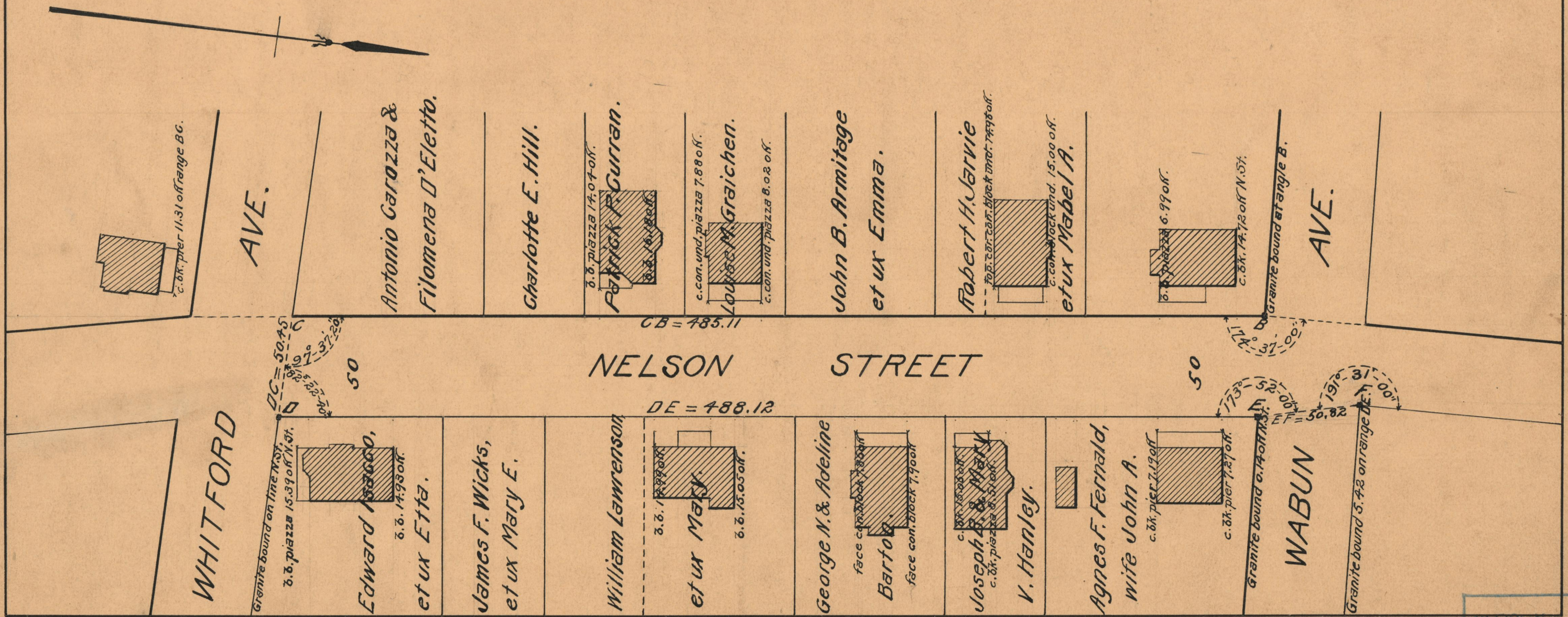
IN TWO SHEETS

SCALE 50 FEET PER INCH

DECLARED AND ESTABLISHED A PUBLIC HIGHWAY
BY RESOLUTION OF THE BOARD OF ALDERMEN

JUNE 16, 1927

PROVIDENCE, R.I.
CITY ENGINEER'S OFFICE
STREET LINE DEPT.
June 22, 1927.
049668



OFFICE No.	23524
DRAWER	73
SHEET	A-92