

PLAT OF NELSON STREET

FROM SMITH ST. TO WHITFORD AVE.

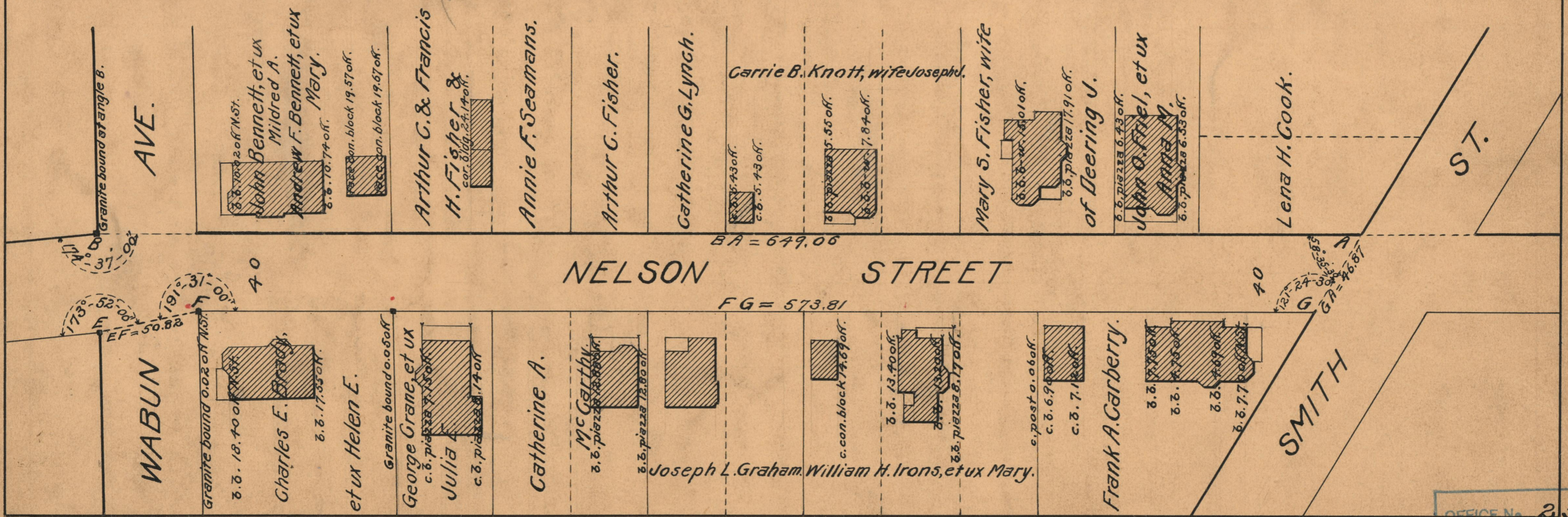
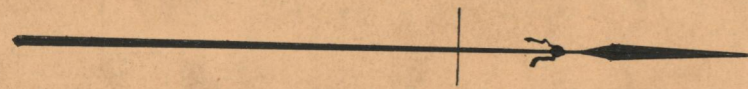
IN TWO SHEETS

SCALE 50 FEET PER INCH

DECLARED AND ESTABLISHED A PUBLIC HIGHWAY
BY RESOLUTION OF THE BOARD OF ALDERMEN
JUNE 16, 1927

PROVIDENCE, R.I.
CITY ENGINEER'S OFFICE
STREET LINE DEPT.
June 22, 1927.
049667

649.06
485.11
488.12
50.82
573.81
2246.92
1123.46



OFFICE No. 23523
DRAWER " 73
SHEET " A-91