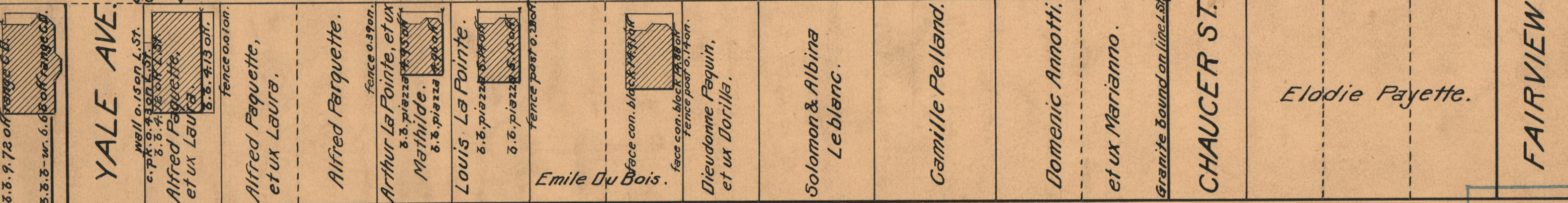
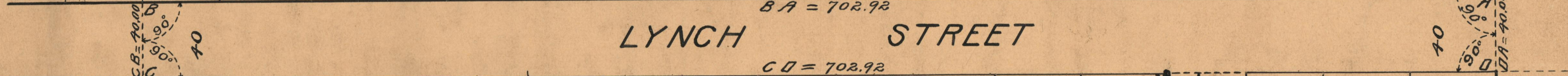
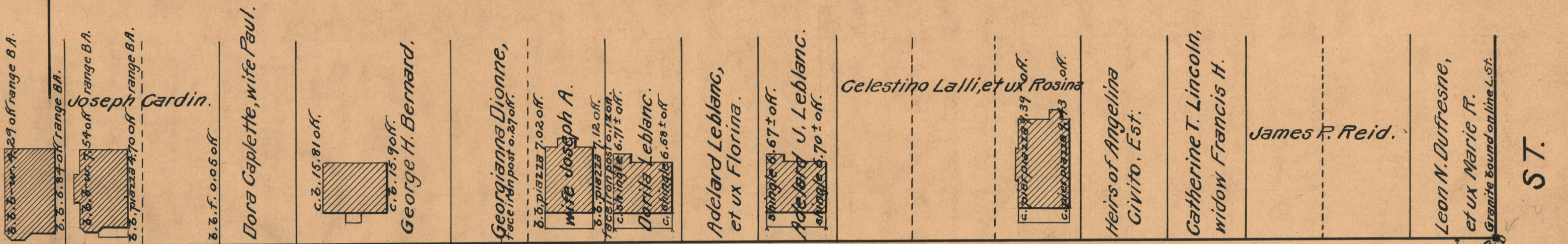


PROVIDENCE, R.I.  
CITY ENGINEER'S OFFICE  
STREET LINE DEPT.  
June 22, 1927.  
049666

PLAT OF  
**LYNCH STREET**  
FROM FAIRVIEW ST. TO YALE AVE.  
SCALE 50 FEET PER INCH  
ESTABLISHED A PUBLIC HIGHWAY  
BY RESOLUTION OF THE BOARD OF ALDERMEN  
JUNE 16, 1927



OFFICE No. 23522  
DRAWER " 73  
SHEET " A-90