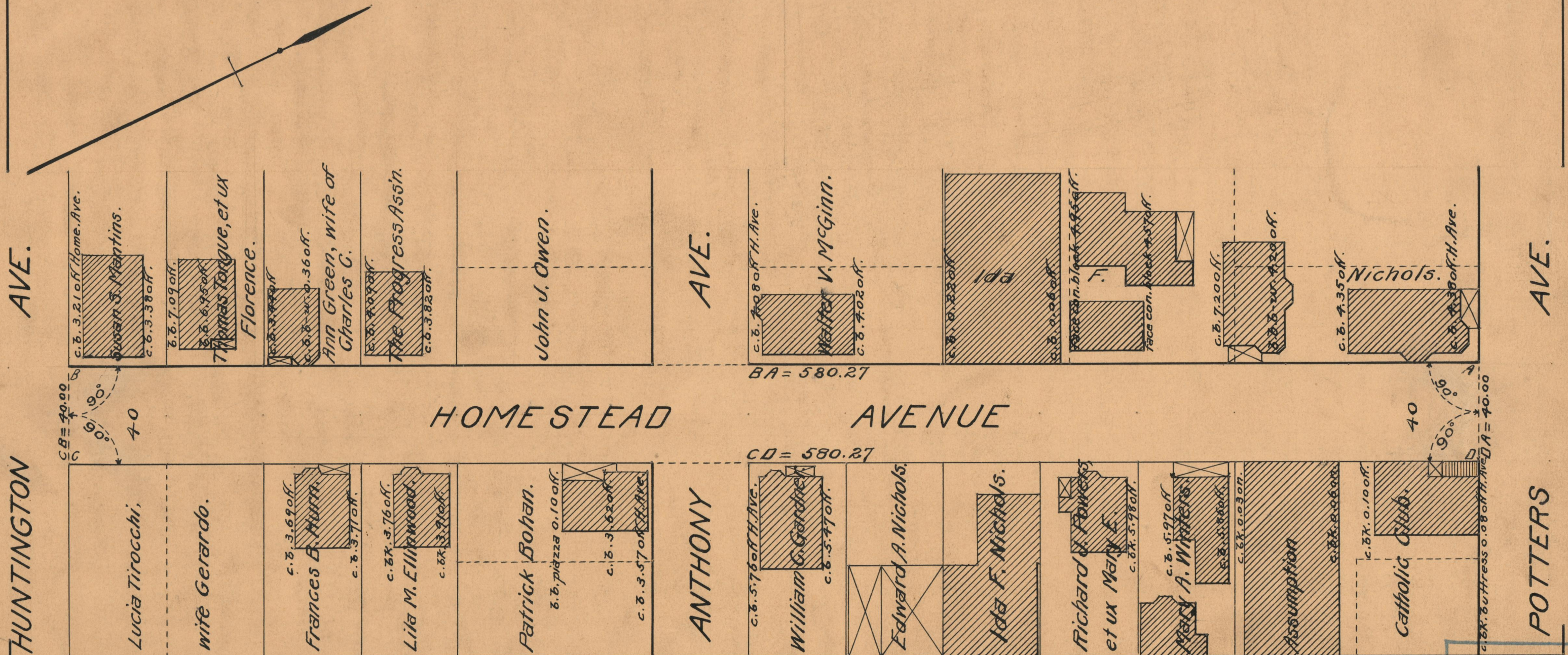


PLAT OF HOMESTEAD AVENUE

FROM POTTERS AVE. TO HUNTINGTON AVE.

SCALE 40 FEET PER INCH

DECLARED AND ESTABLISHED A PUBLIC HIGHWAY
BY RESOLUTION OF THE BOARD OF ALDERMEN
JUNE 16, 1927



HUNTINGTON AVE.

HUNTINGTON AVE.

AVE.

ANTHONY

BA = 580.27

CD = 580.27

HOMESTEAD AVENUE

AVE.

POTTERS

OFFICE No.	23520
DRAWER	73
SHEET	A-88