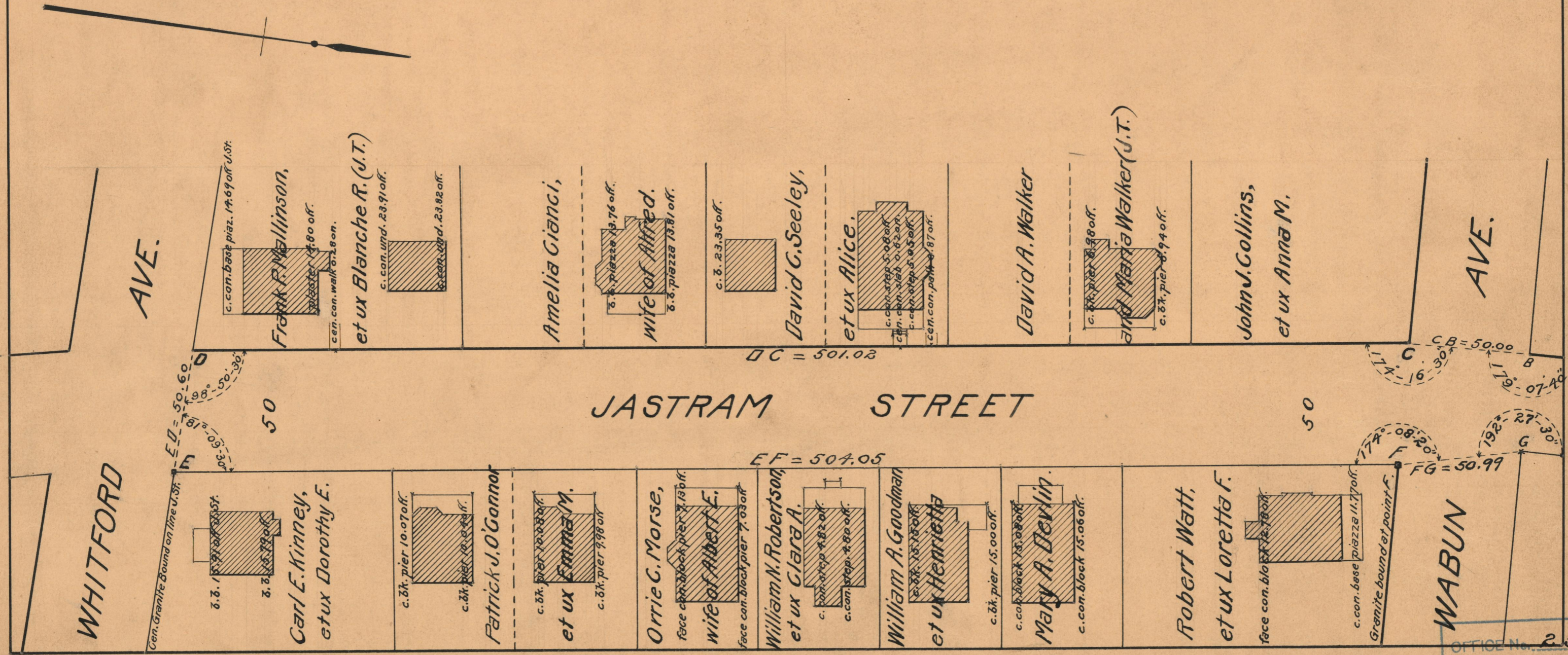


PLAT OF
JASTRAM STREET
 FROM SMITH ST. TO WHITFORD AVE.
 IN TWO SHEETS
 SCALE 40 FEET PER INCH
 ESTABLISHED A PUBLIC HIGHWAY BY RESOLUTION
 OF THE BOARD OF ALDERMEN
 MAY 19, 1927

PROVIDENCE, R.I.
 CITY ENGINEER'S OFFICE
 STREET LINE DEPT.
 June 10, 1927.

049643



OFFICE No. 23513
 DRAWER " 73
 SHEET " A-86