

PROVIDENCE, R.I.
CITY ENGINEER'S OFFICE
STREET LINE DEPT.
June 10, 1927.
049639

PLAT OF WABUN AVENUE

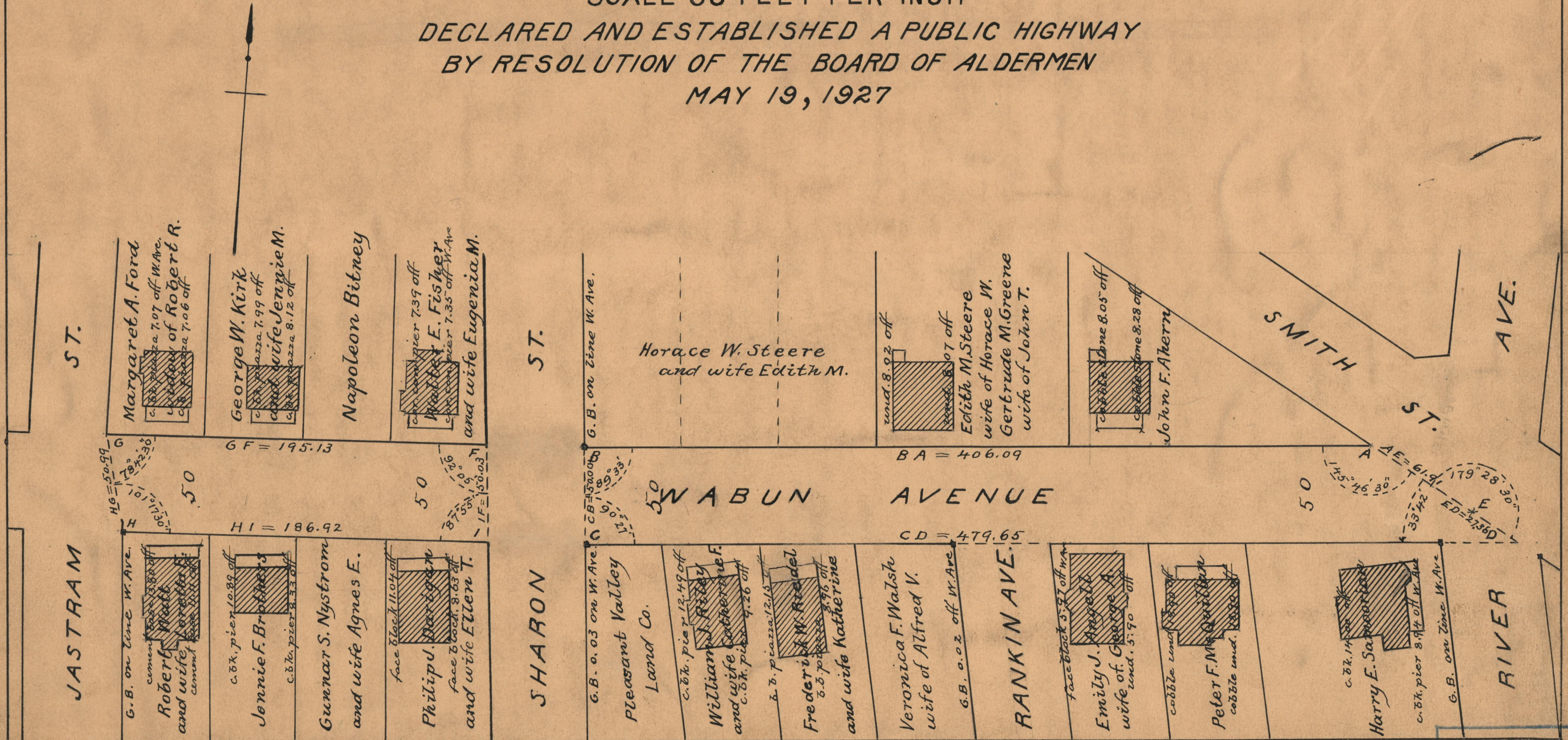
FROM SMITH ST. TO SHARON ST.

AND

FROM SHARON ST. TO JASTRAM ST.

SCALE 50 FEET PER INCH

DECLARED AND ESTABLISHED A PUBLIC HIGHWAY
BY RESOLUTION OF THE BOARD OF ALDERMEN
MAY 19, 1927



OFFICE No.	23508
DRAWER	73
SHEET	A-84