

PLAT OF  
**ELMGROVE AVENUE**

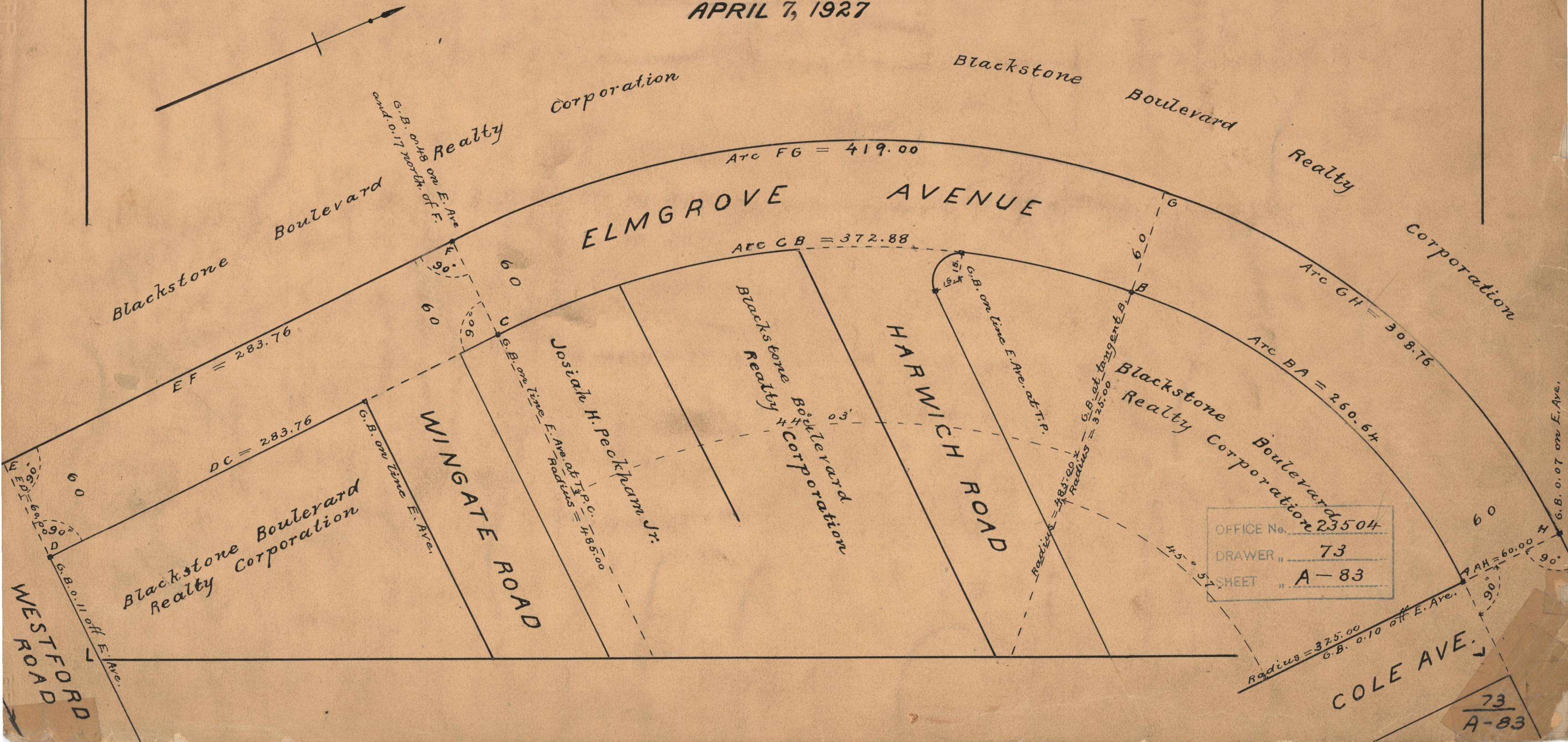
FROM COLE AVE. TO WESTFORD RD.

SCALE 50 FEET PER INCH

DECLARED A PUBLIC HIGHWAY BY RESOLUTION  
 OF THE BOARD OF ALDERMEN  
 APRIL 7, 1927

PROVIDENCE, R.I.  
 CITY ENGINEER'S OFFICE  
 STREET LINE DEPT.  
 June 2, 1927

0495B3



OFFICE No. 23504  
 DRAWER " 73  
 SHEET " A-83

73  
 A-83