

Mar. 17, 1927

049419

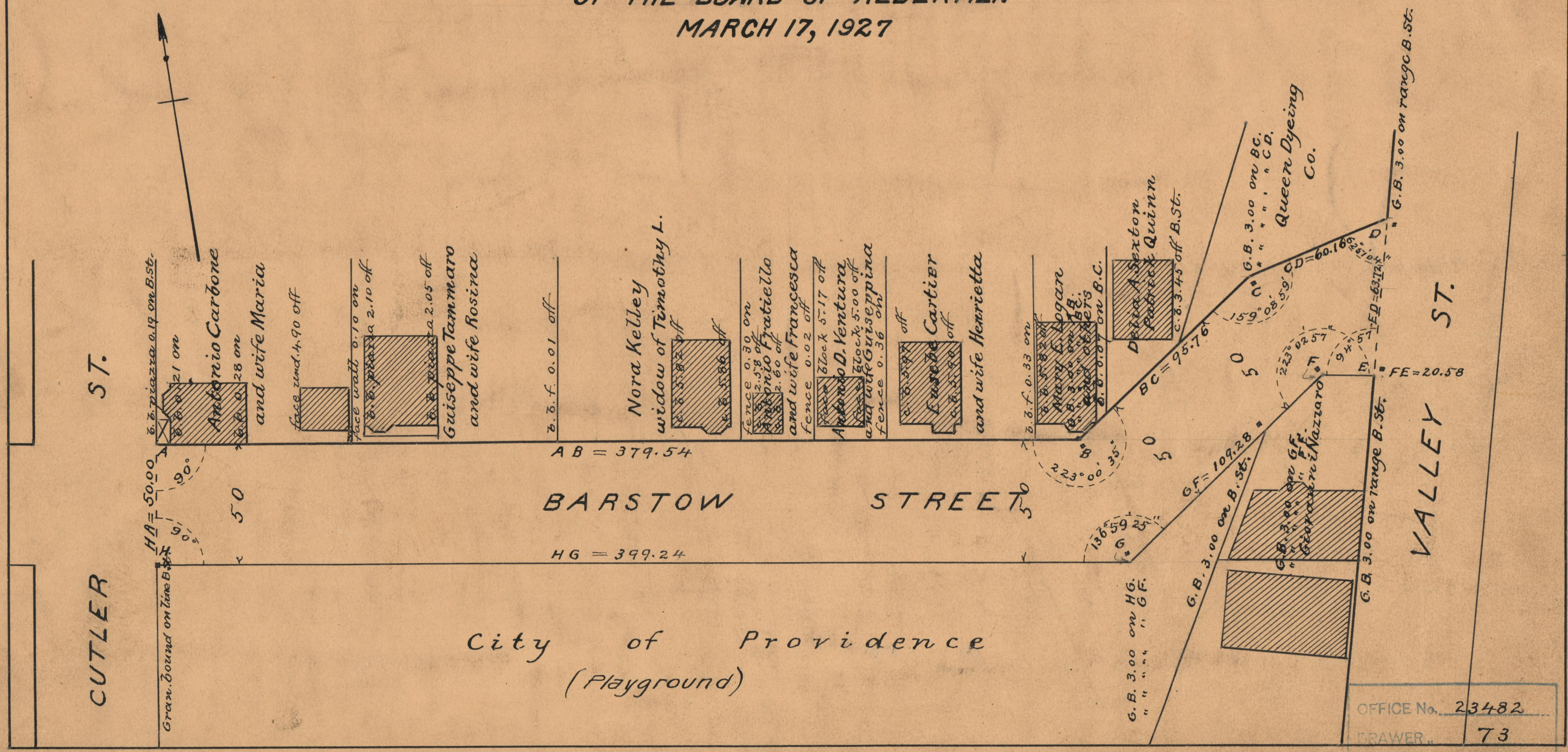
# PLAT OF BARSTOW STREET

FROM CUTLER ST. TO VALLEY ST.

SCALE 40 FEET PER INCH

DECLARED AND ESTABLISHED A PUBLIC HIGHWAY BY RESOLUTION  
OF THE BOARD OF ALDERMEN

MARCH 17, 1927



OFFICE No.	23482
DRAWER	73
SHEET	A-82