

PLAT OF MEETING STREET

FROM PROSPECT ST. TO A POINT ABOUT
15 FEET EAST OF THAYER ST.

IN TWO SHEETS

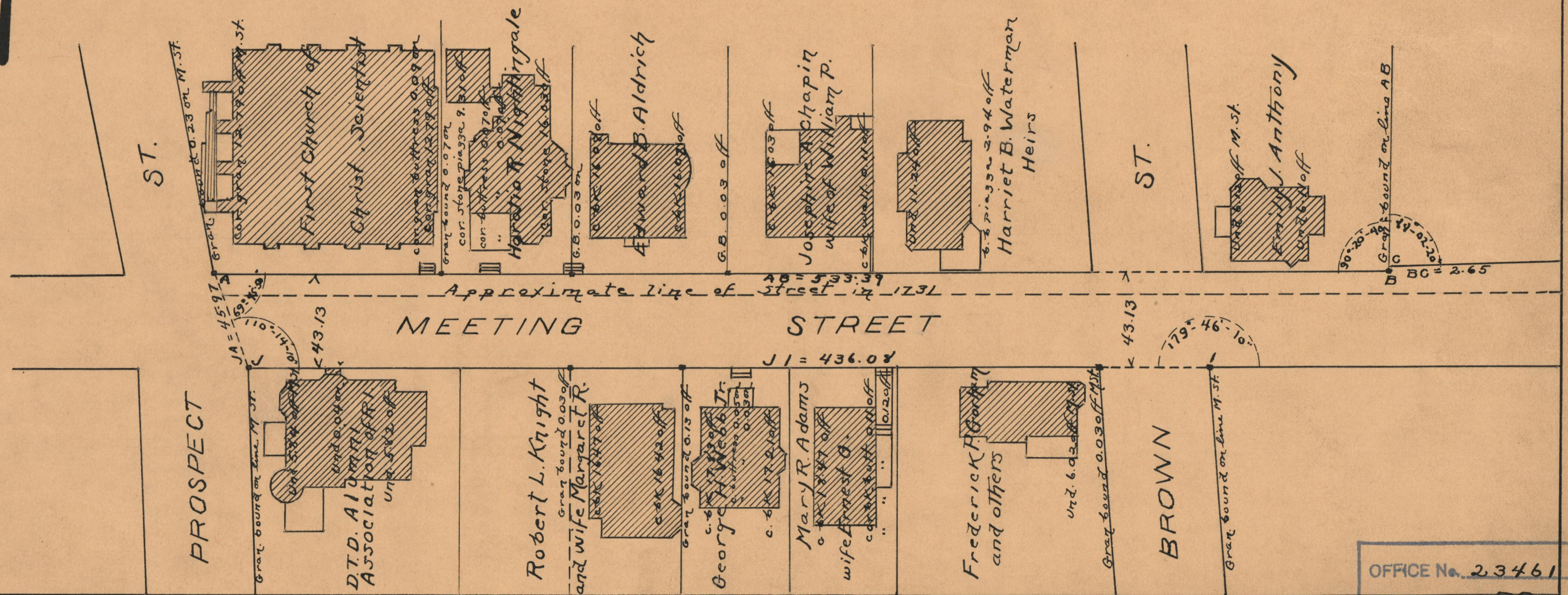
SCALE 50 FEET PER INCH

DECLARED A PUBLIC HIGHWAY BY RESOLUTION
OF THE BOARD OF ALDERMEN
FEBRUARY 17, 1927

PROVIDENCE, R.I.
CITY ENGINEER'S OFFICE
STREET LINE DEPT.

March 16, 1929

051483



OFFICE No.	23461
DRAWN	73
SHEET	A-79